

An aerial photograph of a vast, deep blue body of water, likely a coastal area or a large bay. Several small, rocky islands are scattered across the water. In the foreground, a white boat is moving from left to right, leaving a white wake. The sky is a pale, hazy blue. The overall scene is serene and expansive.

**GARMIN**<sup>®</sup>

**2019** | BLUECHART<sup>™</sup>  
AVAILABILITY

# CONTENTS

|                                                |    |
|------------------------------------------------|----|
| BlueChart® g3 & BlueChart® g3 Vision . . . . . | 04 |
| ActiveCaptain® . . . . .                       | 05 |
| How to read your Product ID code . . . . .     | 08 |
| United States . . . . .                        | 09 |
| Canada . . . . .                               | 14 |
| Caribbean . . . . .                            | 16 |
| Bermuda . . . . .                              | 17 |
| Europe . . . . .                               | 18 |
| South America . . . . .                        | 27 |
| Africa . . . . .                               | 28 |
| Asia . . . . .                                 | 29 |
| Russia . . . . .                               | 31 |
| Australia/New Zealand . . . . .                | 32 |
| Pacific Islands . . . . .                      | 35 |
| Greenland . . . . .                            | 36 |

GARMIN®



NEW

# BLUECHART® COASTAL CHARTS

FEATURING  NAVIONICS® DATA

Worldwide coverage available

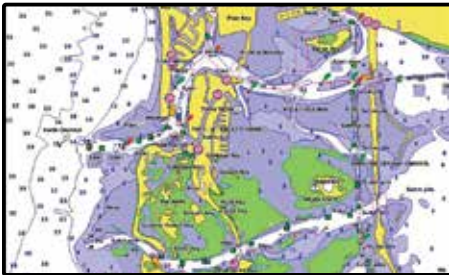
## BLUECHART® G3 □

Experience unparalleled coverage and brilliant detail when you're on the water. BlueChart g3 coastal charts provide industry-leading coverage, clarity and detail with integrated Garmin and Navionics content. The charts also calculate suggested routes with Auto Guidance<sup>1</sup>.

## BLUECHART® G3 VISION ■

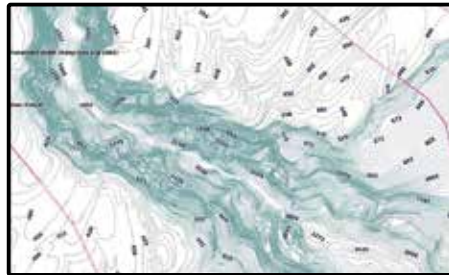
BlueChart g3 Vision is our premium chart offering, which includes all the reliability, features and integrated Garmin and Navionics content of BlueChart g3 while adding even more industry-leading features such as high-resolution elevation shading, to help you along your journeys.

### ADVANCED CHART DETAIL □ ■



Highly detailed charts with Navionics data help mariners guide their boats in and out of port with confidence.

### DETAILED CONTOURS □ ■



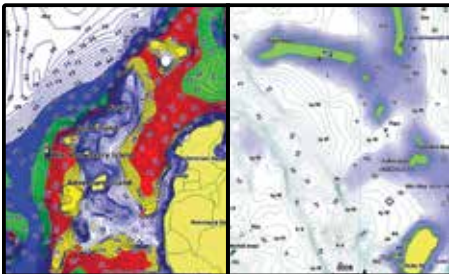
BlueChart g3 features up to 1' contours that provide a more accurate depiction of bottom structure for improved fishing charts and enhanced detail in swamps, canals and port plans.

### AUTO GUIDANCE □ ■



Charts include Auto Guidance<sup>1</sup> technology to calculate suggested routes.

### DEPTH RANGE/SHALLOW WATER SHADING □ ■



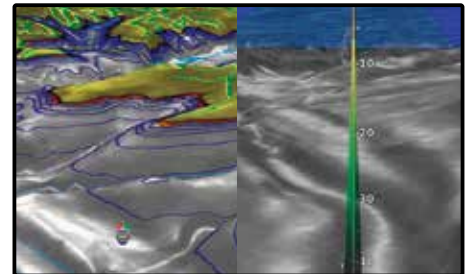
High-resolution depth range shading for up to 10 depth ranges and shallow water shading for a user-defined depth gives a clear picture of shallow waters.

### SATELLITE IMAGERY ■



Detailed satellite imagery overlaid onto navigational charts provides a realistic view of your surroundings.

### 3-D VIEWS ■



MarinersEye and FishEye views provide 3-D representations of the surrounding area above and below the waterline.

### AERIAL PHOTOGRAPHY ■



Pictures show exceptional detail of many ports, harbors and marinas. This is ideal when entering unfamiliar ports.

<sup>1</sup>Auto Guidance is for planning purposes only and does not replace safe navigation operations. Not all chart features will display on all devices, particularly legacy devices. As engineering enhancements are ongoing, new features may not display on such legacy products, as well.

# ACTIVECAPTAIN® APP



Give yourself the advantages of the ultimate connected boating experience. Download the free all-in-one ActiveCaptain app. It provides you with a powerful connection to your Garmin chartplotter, charts, maps and the community. Wherever you are, you can have unlimited access to your cartography, purchase new maps and charts, and access the Garmin Quickdraw™ Contours Community.

## SPECIAL ACTIVECAPTAIN FEATURES

OneChart™ gives you access to all your charts and maps from your mobile device and lets you purchase new ones

Receive smart notifications, such as calls and texts, on your chartplotter display when paired with the app

Download software updates and notifications from the app directly to your Garmin devices

Connect to fellow boaters with the ActiveCaptain community for up-to-date feedback on marinas and other points of interest

Make, save and transfer routes and waypoints between the app and chartplotter – with zero button presses<sup>1</sup>

Easily upload and download the latest Garmin Quickdraw™ Contours content from the community – with zero button presses<sup>1</sup>

View and control your chartplotter from your smartphone or tablet



## NEW CHART GUARANTEE

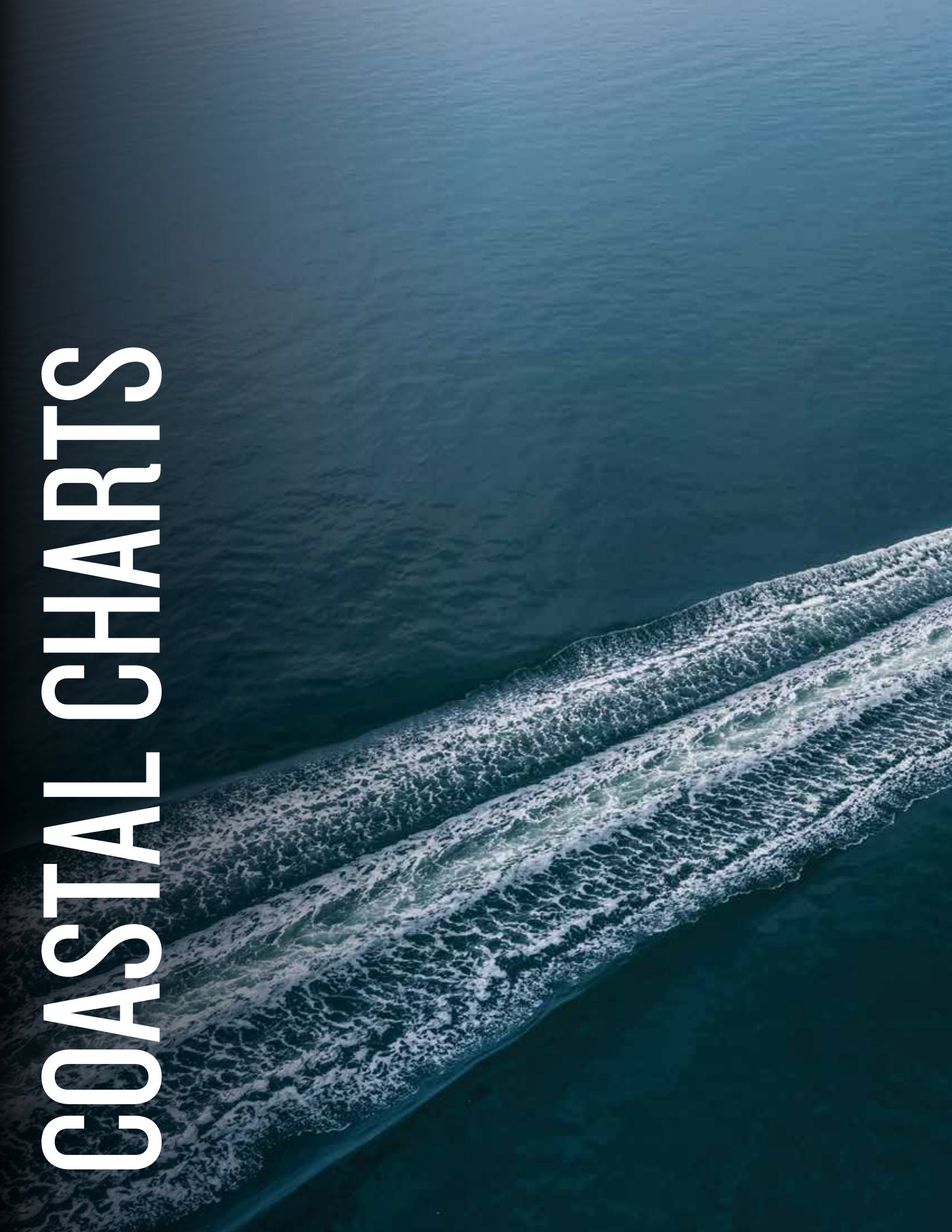
Customers who purchase new preprogrammed Garmin BlueChart g3 or BlueChart g3 Vision microSD™ cards are entitled to 1 free update<sup>2</sup> of the newest version of charts. If eligible, customers can update cards using ActiveCaptain™ or Garmin Express. Updated charts will be for the same region as the original purchase.

## DISCOUNTED CARD UPDATE PROGRAM

Customers may update their existing preprogrammed BlueChart g3 and BlueChart g3 Vision microSD/SD card for a discounted price<sup>2</sup>. Updated charts will be for the same region as the original purchase.

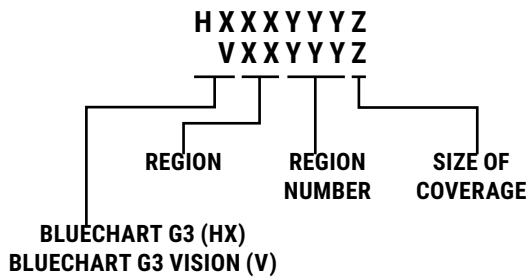
<sup>1</sup>Zero button presses applies to GPSMAP® chartplotters only • <sup>2</sup>Limit 1 free update per card. New Chart Guarantee valid within 12 months of purchase.

# COASTAL CHARTS





# HOW TO READ YOUR PRODUCT ID CODE



## REGION (XX) CODES INCLUDE:

AE = Asia, East (Japan, China, Indonesia, etc.)  
AF = Africa  
AW = Asia, West  
CA = Canada  
EU = Europe (including all Mediterranean Sea)  
PC = Pacific Ocean (Australia, New Zealand, etc.)  
SA = South America  
US = United States and the Caribbean

## SIZE OF COVERAGE (Z)

### CODES INCLUDE:

X = X-Large  
L = Large  
R = Regular  
S = Small





# UNITED STATES



## UNITED STATES ALL AND CANADIAN WEST COAST

### BLUECHART G3

U.S. All and  
Canadian West Coast

|             |              |
|-------------|--------------|
| Region      | US604X       |
| ID Code     | HXUS604X     |
| Part Number | 010-C1018-20 |
| Price       | \$249.99     |



## UNITED STATES WEST COAST

### BLUECHART G3 VISION

|             | Hawaiian Islands-<br>Mariana Islands | Vancouver-<br>San Diego |
|-------------|--------------------------------------|-------------------------|
| Region      | US027R                               | US037R                  |
| ID Code     | VUS027R                              | VUS037R                 |
| Part Number | 010-C0728-00                         | 010-C1003-00            |
| Price       | €399.99                              | €399.99                 |

### BLUECHART G3

|             | Hawaiian Islands-<br>Mariana Islands |
|-------------|--------------------------------------|
| Region      | US027R                               |
| ID Code     | HXUS027R                             |
| Part Number | 010-C0728-20                         |
| Price       | €169.99                              |

### BLUECHART G2 VISION HD

|             | California-<br>Mexico |
|-------------|-----------------------|
| Region      | US021R                |
| ID Code     | VUS021R               |
| Part Number | 010-C0722-00          |
| Price       | €399.99               |

### BLUECHART G2 HD

|             | California-<br>Mexico |
|-------------|-----------------------|
| Region      | US021R                |
| ID Code     | HXUS021R              |
| Part Number | 010-C0722-20          |
| Price       | €169.99               |

# GULF OF MEXICO



## BLUECHART G3 VISION

|             | Southwest Florida | Tampa-New Orleans | Mobile-Lake Charles | Morgan City-Brownsville | Brownsville-Key Largo |
|-------------|-------------------|-------------------|---------------------|-------------------------|-----------------------|
| Region      | US011R            | US012R            | US013R              | US014R                  | US515L                |
| ID Code     | VUS011R           | VUS012R           | VUS013R             | VUS014R                 | VUS515L               |
| Part Number | 010-C0712-00      | 010-C0713-00      | 010-C0714-00        | 010-C0715-00            | 010-C0744-00          |
| Price       | €399.99           | €399.99           | €399.99             | €399.99                 | €499.99               |



# UNITED STATES EAST COAST

## BLUECHART G3 VISION

|             | St. John-Cape Cod | Boston-Norfolk | Mid-Atlantic | Jacksonville-Bahamas |
|-------------|-------------------|----------------|--------------|----------------------|
| Region      | US510L            | US511L         | US512L       | US513L               |
| ID Code     | VUS510L           | VUS511L        | VUS512L      | VUS513L              |
| Part Number | 010-C0739-00      | 010-C0740-00   | 010-C0741-00 | 010-C0742-00         |
| Price       | €499.99           | €499.99        | €499.99      | €499.99              |

## UNITED STATES SOUTHEAST COAST



### BLUECHART G3 VISION

|             | Charleston-Jacksonville | Jacksonville-Key West |
|-------------|-------------------------|-----------------------|
| Region      | US008R                  | US009R                |
| ID Code     | VUS008R                 | VUS009R               |
| Part Number | 010-C0709-00            | 010-C0710-00          |
| Price       | €399.99                 | €399.99               |

## UNITED STATES NORTHEAST COAST



### BLUECHART G3 VISION

|             | North Maine  | South Maine  | Cape Cod     | New York     | New York-Chesapeake | Norfolk-Charleston |
|-------------|--------------|--------------|--------------|--------------|---------------------|--------------------|
| Region      | US001R       | US002R       | US003R       | US004R       | US038R              | US007R             |
| ID Code     | VUS001R      | VUS002R      | VUS003R      | VUS004R      | VUS038R             | VUS007R            |
| Part Number | 010-C0702-00 | 010-C0703-00 | 010-C0704-00 | 010-C0705-00 | 010-C1004-00        | 010-C0708-00       |
| Price       | €399.99      | €399.99      | €399.99      | €399.99      | €399.99             | €399.99            |

## UNITED STATES ALASKA



### BLUECHART G3 VISION

|             | Wrangell-Dixon Entrance | Anchorage-Juneau | Wrangell / Juneau / Sitka | Bristol Bay-Kotzebue Snd. | Aleutian Islands | North Slope Alaska |
|-------------|-------------------------|------------------|---------------------------|---------------------------|------------------|--------------------|
| Region      | US024R                  | US025R           | US026R                    | US033R                    | US034R           | US035R             |
| ID Code     | VUS024R                 | VUS025R          | VUS026R                   | VUS033R                   | VUS034R          | VUS035R            |
| Part Number | 010-C0725-00            | 010-C0726-00     | 010-C0727-00              | 010-C0734-00              | 010-C0735-00     | 010-C0736-00       |
| Price       | €399.99                 | €399.99          | €399.99                   | €399.99                   | €399.99          | €399.99            |

## UNITED STATES ALASKA 2



### BLUECHART G3 VISION

|             | Alaska South |
|-------------|--------------|
| Region      | US517L       |
| ID Code     | VUS517L      |
| Part Number | 010-C0887-00 |
| Price       | €499.99      |

# CANADA

CANADA



## BLUECHART G3 VISION

|             | St. Lawrence Seaway |
|-------------|---------------------|
| Region      | US020R              |
| ID Code     | VUS020R             |
| Part Number | 010-C0721-00        |
| Price       | €399.99             |

## BLUECHART G3

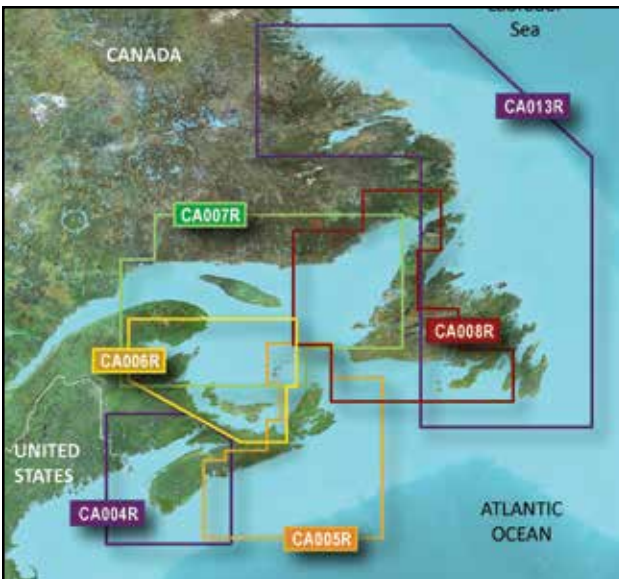
|             | Canada       |
|-------------|--------------|
| Region      | CA600X       |
| ID Code     | HXCA600X     |
| Part Number | 010-C1019-20 |
| Price       | €249.99      |

## CANADA WEST



### BLUECHART G3 VISION

|             | Inside-<br>Outside Passage | Hecate Strait | Puget Sound-<br>Dixon Entrance |
|-------------|----------------------------|---------------|--------------------------------|
| Region      | CA018R                     | CA019R        | CA501L                         |
| ID Code     | VCA018R                    | VCA019R       | VCA501L                        |
| Part Number | 010-C1105-00               | 010-C1106-00  | 010-C0701-00                   |
| Price       | €399.99                    | €399.99       | €499.99                        |



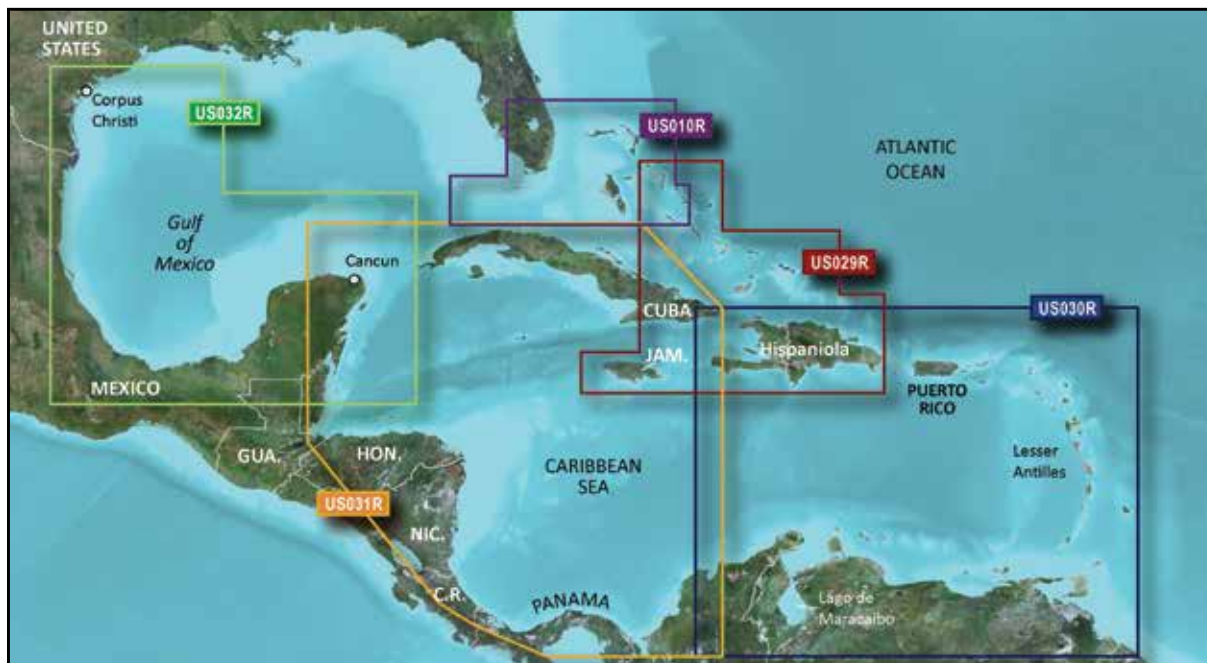
## CANADA EAST

### BLUECHART G3 VISION

|             | Bay of Fundy | Halifax-<br>Cape Breton | P.E.I.-<br>Chaleur Bay | Les Mechins-<br>St. George's Bay | Newfoundland<br>West | Labrador Coast |
|-------------|--------------|-------------------------|------------------------|----------------------------------|----------------------|----------------|
| Region      | CA004R       | CA005R                  | CA006R                 | CA007R                           | CA008R               | CA013R         |
| ID Code     | VCA004R      | VCA005R                 | VCA006R                | VCA007R                          | VCA008R              | VCA013R        |
| Part Number | 010-C0690-00 | 010-C0691-00            | 010-C0692-00           | 010-C0693-00                     | 010-C0694-00         | 010-C0698-00   |
| Price       | €399.99      | €399.99                 | €399.99                | €399.99                          | €399.99              | €399.99        |

# CARIBBEAN

## CARIBBEAN



### BLUECHART G3 VISION

|             | Southeast Florida and Bahamas | Southern Bahamas |
|-------------|-------------------------------|------------------|
| Region      | US010R                        | US029R           |
| ID Code     | VUS010R                       | VUS029R          |
| Part Number | 010-C0711-00                  | 010-C0730-00     |
| Price       | €399.99                       | €399.99          |

### BLUECHART G3

|             | Southern Bahamas |
|-------------|------------------|
| Region      | US029R           |
| ID Code     | HXUS029R         |
| Part Number | 010-C0730-20     |
| Price       | €169.99          |

### BLUECHART G2 VISION HD

|             | Southeast Caribbean | Southwest Caribbean | Southern Gulf of Mexico |
|-------------|---------------------|---------------------|-------------------------|
| Region      | US030R              | US031R              | US032R                  |
| ID Code     | VUS030R             | VUS031R             | VUS032R                 |
| Part Number | 010-C0731-00        | 010-C0732-00        | 010-C0733-00            |
| Price       | €399.99             | €399.99             | €399.99                 |

### BLUECHART G2 HD

|             | Southeast Caribbean | Southwest Caribbean | Southern Gulf of Mexico |
|-------------|---------------------|---------------------|-------------------------|
| Region      | US030R              | US031R              | US032R                  |
| ID Code     | HXUS030R            | HXUS031R            | HXUS032R                |
| Part Number | 010-C0731-20        | 010-C0732-20        | 010-C0733-20            |
| Price       | €169.99             | €169.99             | €169.99                 |



# BERMUDA



## BERMUDA

### BLUECHART G3 VISION

#### Bermuda

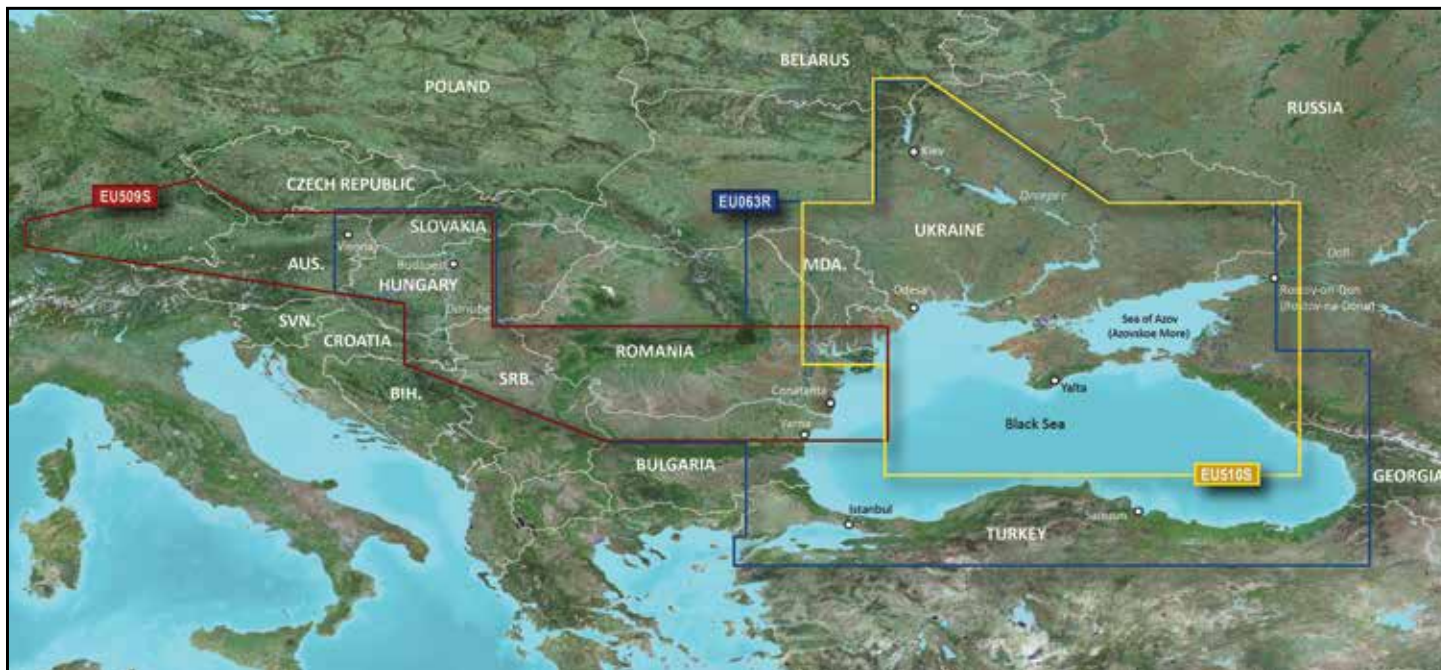
|             |              |
|-------------|--------------|
| Region      | US048R       |
| ID Code     | VUS048R      |
| Part Number | 010-C1024-00 |
| Price       | €399.99      |

### BLUECHART G3

#### Bermuda

|             |              |
|-------------|--------------|
| Region      | US048R       |
| ID Code     | HXUS048R     |
| Part Number | 010-C1024-20 |
| Price       | €169.99      |

# EUROPE



## BLACK SEA

### BLUECHART G3 VISION

|             | Black Sea and Sea of Azov | Danube River | Dnieper River and Sea of Azov |
|-------------|---------------------------|--------------|-------------------------------|
| Region      | EU063R                    | EU509S       | EU510S                        |
| ID Code     | VEU063R                   | VEU509S      | VEU510S                       |
| Part Number | 010-C1064-00              | 010-C1127-00 | 010-C1128-00                  |
| Price       | €279.99                   | €199.99      | €199.99                       |

### BLUECHART G3

|             | Black Sea and Sea of Azov |
|-------------|---------------------------|
| Region      | EU063R                    |
| ID Code     | HXEU063R                  |
| Part Number | 010-C1064-20              |
| Price       | €149.99                   |



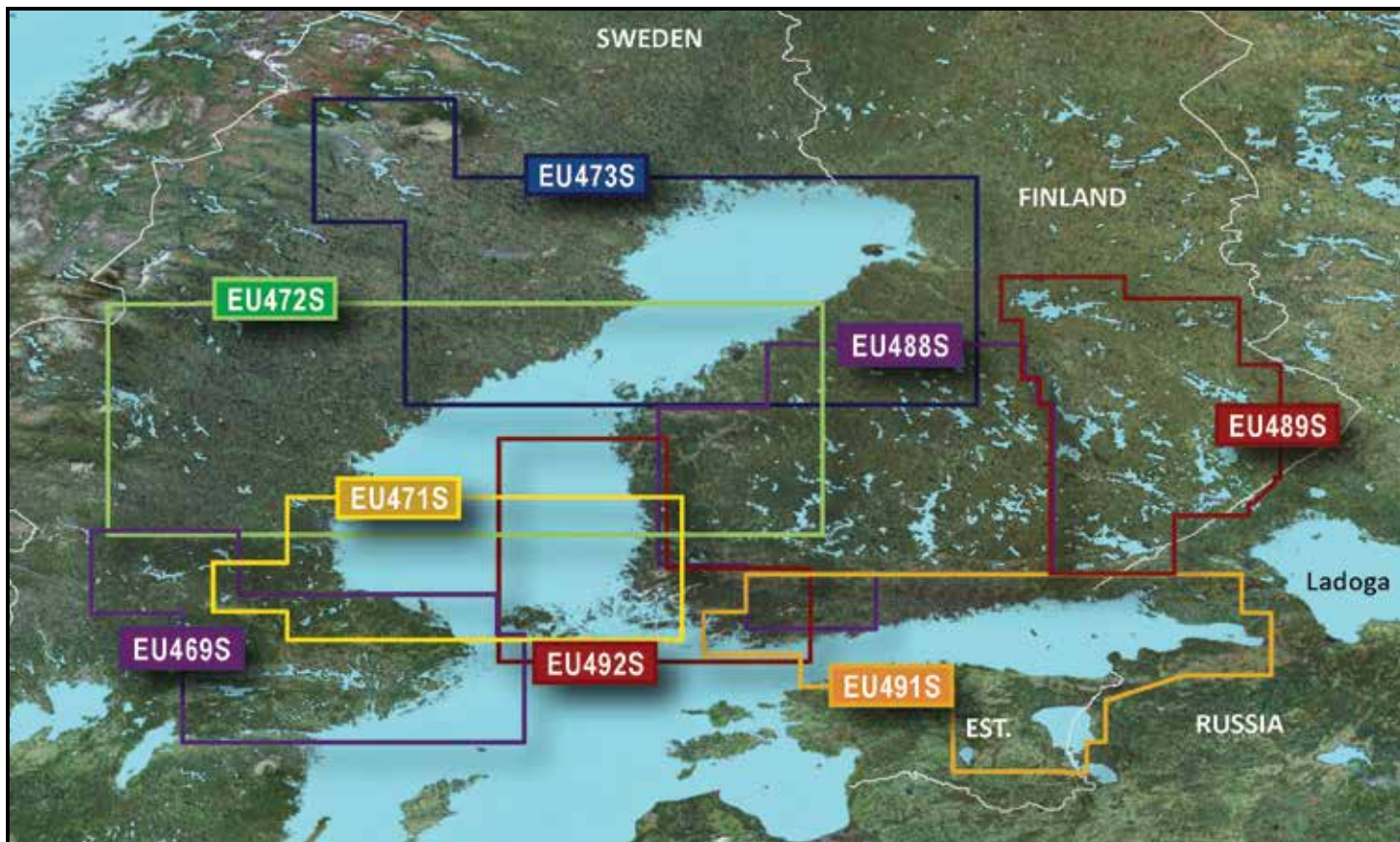
## NORDICS 1

### BLUECHART G3 VISION

|             | Vestfjd-Svalbard-Varanger | Northern Europe |
|-------------|---------------------------|-----------------|
| Region      | EU054R                    | EU721L          |
| ID Code     | VEU054R                   | VEU721L         |
| Part Number | 010-C0790-00              | 010-C1155-00    |
| Price       | €279.99                   | €399.99         |

### BLUECHART G3

|             | Vestfjd-Svalbard-Varanger |
|-------------|---------------------------|
| Region      | EU054R                    |
| ID Code     | HXEU054R                  |
| Part Number | 010-C0790-20              |
| Price       | €149.99                   |



## NORDICS 2

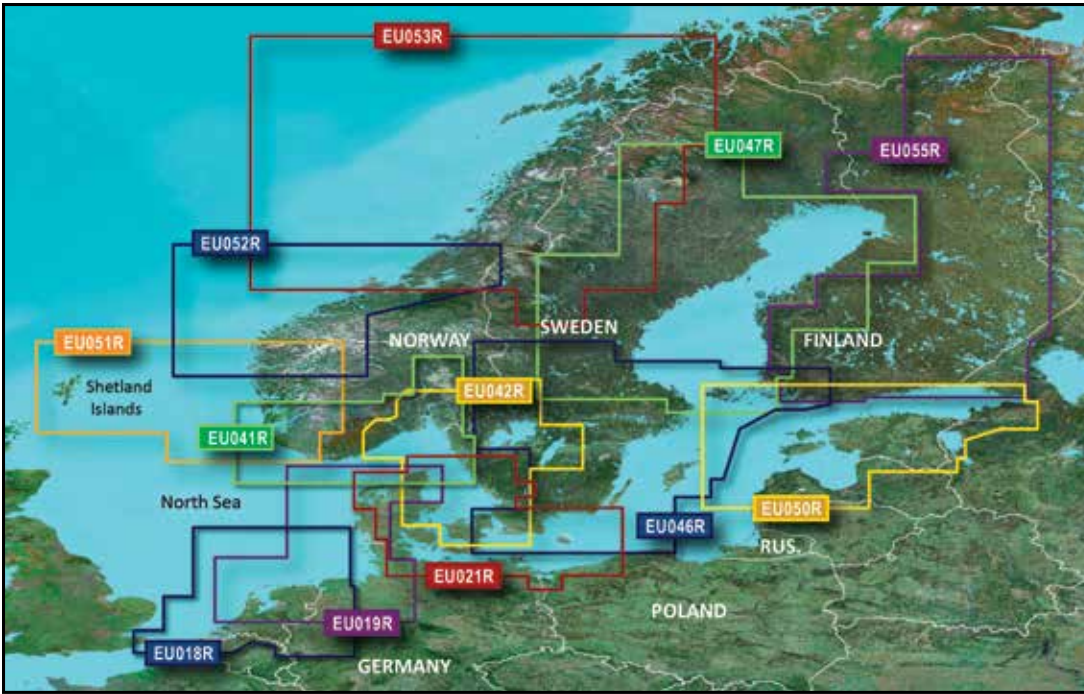
### BLUECHART G3 VISION

|             | Stockholm and Mälaren | Gulf of Bothnia, South | Gulf of Bothnia, Center | Gulf of Bothnia, North |
|-------------|-----------------------|------------------------|-------------------------|------------------------|
| Region      | EU469S                | EU471S                 | EU472S                  | EU473S                 |
| ID Code     | VEU469S               | VEU471S                | VEU472S                 | VEU473S                |
| Part Number | 010-C0813-00          | 010-C0815-00           | 010-C0816-00            | 010-C0817-00           |
| Price       | €199.99               | €199.99                | €199.99                 | €199.99                |

|             | Keitele-Paijanne-Tampere | Hanko-St. Petersburg-Tallinn | Hanko-St. Petersburg-Tallinn | Kristinestad-Hanko |
|-------------|--------------------------|------------------------------|------------------------------|--------------------|
| Region      | EU488S                   | EU491S                       | EU491S                       | EU492S             |
| ID Code     | VEU488S                  | VEU491S                      | VEU491S                      | VEU492S            |
| Part Number | 010-C0832-00             | 010-C0835-00                 | 010-C0835-00                 | 010-C0836-00       |
| Price       | €199.99                  | €199.99                      | €199.99                      | €199.99            |

# NORDICS 3



## BLUECHART G3 VISION

|             | Oslo-Skagerrak-Haugesund | Gulfs of Finland and Riga | Lista-Sognefjorden | Sognefjorden-Svefjorden | Trondheim-Tromsø | Finnish Lakes |
|-------------|--------------------------|---------------------------|--------------------|-------------------------|------------------|---------------|
| Region      | EU041R                   | EU050R                    | EU051R             | EU052R                  | EU053R           | EU055R        |
| ID Code     | VEU041R                  | VEU050R                   | VEU051R            | VEU052R                 | VEU053R          | VEU055R       |
| Part Number | 010-C0778-00             | 010-C0786-00              | 010-C0787-00       | 010-C0788-00            | 010-C0789-00     | 010-C0791-00  |
| Price       | €279.99                  | €279.99                   | €279.99            | €279.99                 | €279.99          | €279.99       |

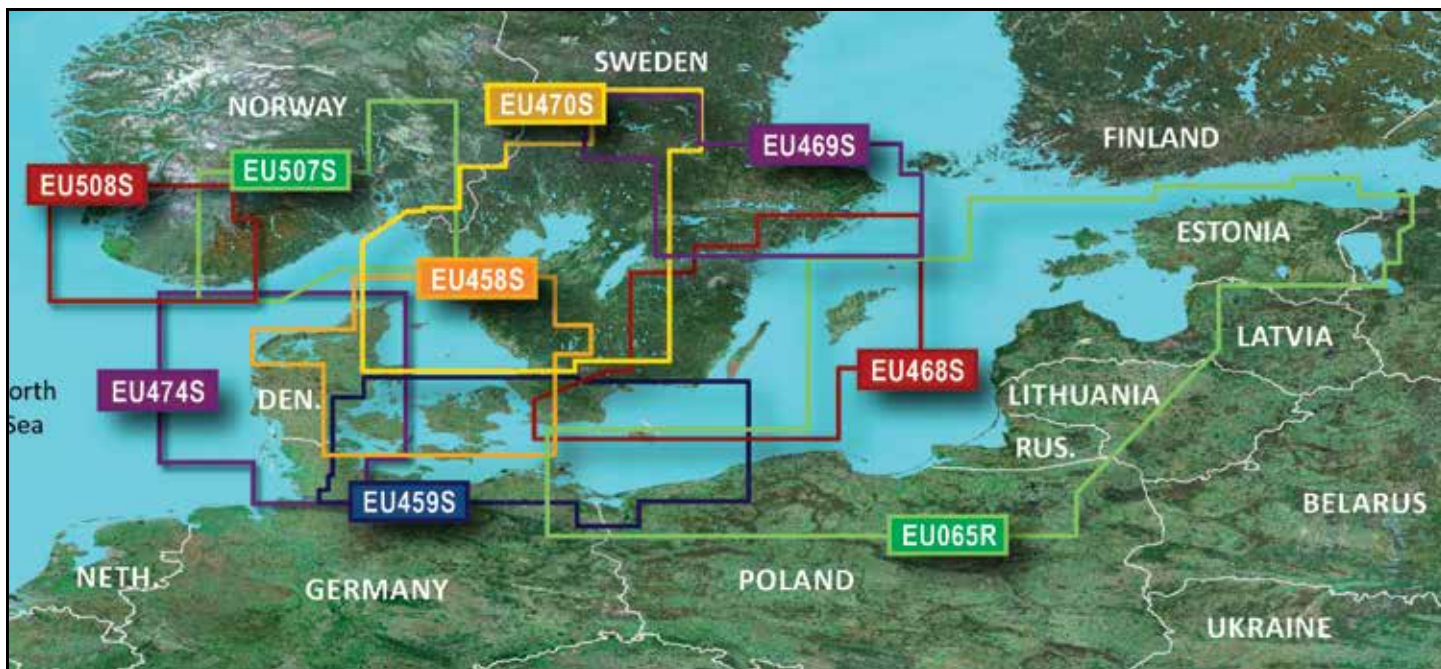
|             | Benelux Offshore and Inland Waters | Aalborg-Amsterdam | Denmark East and Sweden SE | Oslo-Trelleborg | Sweden, South-East | Gulf of Bothnia-Kalix-Grisslehamn |
|-------------|------------------------------------|-------------------|----------------------------|-----------------|--------------------|-----------------------------------|
| Region      | EU018R                             | EU019R            | EU021R                     | EU042R          | EU046R             | EU047R                            |
| ID Code     | VEU018R                            | VEU019R           | VEU021R                    | VEU042R         | VEU046R            | VEU047R                           |
| Part Number | 010-C0775-00                       | 010-C0776-00      | 010-C0777-00               | 010-C0779-00    | 010-C0782-00       | 010-C0783-00                      |
| Price       | €279.99                            | €279.99           | €279.99                    | €279.99         | €279.99            | €279.99                           |

## BLUECHART G3

|             | Oslo-Skagerrak-Haugesund | Gulfs of Finland and Riga | Lista-Sognefjorden | Sognefjorden-Svefjorden | Trondheim-Tromsø | Finnish Lakes |
|-------------|--------------------------|---------------------------|--------------------|-------------------------|------------------|---------------|
| Region      | EU041R                   | EU050R                    | EU051R             | EU052R                  | EU053R           | EU055R        |
| ID Code     | HXEU041R                 | HXEU050R                  | HXEU051R           | HXEU052R                | HXEU053R         | HXEU055R      |
| Part Number | 010-C0778-20             | 010-C0786-20              | 010-C0787-20       | 010-C0788-20            | 010-C0789-20     | 010-C0791-20  |
| Price       | €149.99                  | €149.99                   | €149.99            | €149.99                 | €149.99          | €149.99       |

|             | Benelux Offshore and Inland Waters | Aalborg-Amsterdam | Denmark East and Sweden SE | Oslo-Trelleborg | Sweden, South-East | Gulf of Bothnia-Kalix-Grisslehamn |
|-------------|------------------------------------|-------------------|----------------------------|-----------------|--------------------|-----------------------------------|
| Region      | EU018R                             | EU019R            | EU021R                     | EU042R          | EU046R             | EU047R                            |
| ID Code     | HXEU018R                           | HXEU019R          | HXEU021R                   | HXEU042R        | HXEU046R           | HXEU047R                          |
| Part Number | 010-C0775-20                       | 010-C0776-20      | 010-C0777-20               | 010-C0779-20    | 010-C0782-20       | 010-C0783-20                      |
| Price       | €149.99                            | €149.99           | €149.99                    | €149.99         | €149.99            | €149.99                           |



## NORDICS 4

### BLUECHART G3 VISION

|             | Baltic Sea, East Coast | Göteborg-Fyn | Århus-Kiel-Koszalin | Stockholm & Malaren | Stromstad-Halmstad | Northern Denmark and the Eider |
|-------------|------------------------|--------------|---------------------|---------------------|--------------------|--------------------------------|
| Region      | EU065R                 | EU458S       | EU459S              | EU469S              | EU470S             | EU474S                         |
| ID Code     | VEU065R                | VUE458S      | VUE459S             | VEU469S             | VUE470S            | VUE474S                        |
| Part Number | 010-C0849-00           | 010-C0802-00 | 010-C0803-00        | 010-C0813-00        | 010-C0814-00       | 010-C0818-00                   |
| Price       | €279.99                | €199.99      | €199.99             | €199.99             | €199.99            | €199.99                        |

|             | Oslo-Mandal-Smogen | Kristiansand-Haugesund-Ryfylke |
|-------------|--------------------|--------------------------------|
| Region      | EU507S             | EU508S                         |
| ID Code     | VEU507S            | VEU508S                        |
| Part Number | 010-C1069-00       | 010-C1070-00                   |
| Price       | €199.99            | €199.99                        |

### BLUECHART G3

|             | Baltic Sea, East Coast |
|-------------|------------------------|
| Region      | EU065R                 |
| ID Code     | HXEU065R               |
| Part Number | 010-C0849-20           |
| Price       | €149.99                |

# EUROPE ATLANTIC COAST 1



## BLUECHART G3 VISION

|             | English Channel | S/E England-Belux Inland Waters | Great Britain, Northeast Coast | Irish Sea    | Ireland, West Coast | Scotland, West Coast |
|-------------|-----------------|---------------------------------|--------------------------------|--------------|---------------------|----------------------|
| Region      | EU001R          | EU002R                          | EU003R                         | EU004R       | EU005R              | EU006R               |
| ID Code     | VEU001R         | VEU002R                         | VEU003R                        | VEU004R      | VEU005R             | VEU006R              |
| Part Number | 010-C0760-00    | 010-C0761-00                    | 010-C0762-00                   | 010-C0763-00 | 010-C0764-00        | 010-C0765-00         |
| Price       | €279.99         | €279.99                         | €279.99                        | €279.99      | €279.99             | €279.99              |

|             | Bay of Biscay | Portugal and Northwest Spain | Germany Inland Waters | France Inland Waters | Europe Atlantic Coast |
|-------------|---------------|------------------------------|-----------------------|----------------------|-----------------------|
| Region      | EU008R        | EU009R                       | EU060R                | EU061R               | EU722L                |
| ID Code     | VEU008R       | VEU009R                      | VEU060R               | VEU061R              | VEU722L               |
| Part Number | 010-C0766-00  | 010-C0767-00                 | 010-C1103-00          | 010-C1104-00         | 010-C1156-00          |
| Price       | €279.99       | €279.99                      | €279.99               | €279.99              | €399.99               |

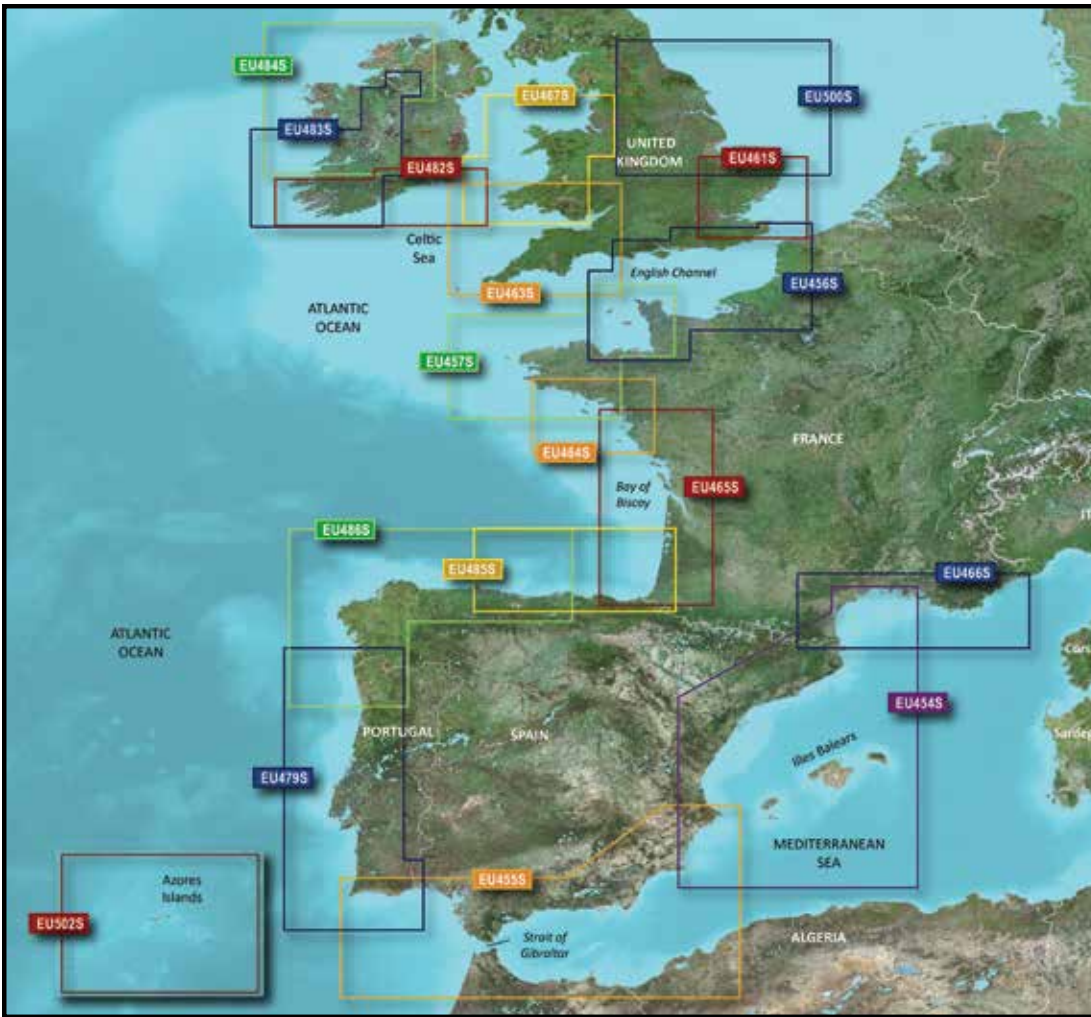
## BLUECHART G3

|             | English Channel | S/E England-Belux Inland Waters | Great Britain, Northeast Coast | Irish Sea    | Ireland, West Coast |
|-------------|-----------------|---------------------------------|--------------------------------|--------------|---------------------|
| Region      | EU001R          | EU002R                          | EU003R                         | EU004R       | EU005R              |
| ID Code     | HXEU001R        | HXEU002R                        | HXEU003R                       | HXEU004R     | HXEU005R            |
| Part Number | 010-C0760-20    | 010-C0761-20                    | 010-C0762-20                   | 010-C0763-20 | 010-C0764-20        |
| Price       | €149.99         | €149.99                         | €149.99                        | €149.99      | €149.99             |

|             | Scotland, West Coast | Bay of Biscay | Portugal and Northwest Spain | Germany Inland Waters | France Inland Waters |
|-------------|----------------------|---------------|------------------------------|-----------------------|----------------------|
| Region      | EU006R               | EU008R        | EU009R                       | EU060R                | EU061R               |
| ID Code     | HXEU006R             | HXEU008R      | HXEU009R                     | HXEU060R              | HXEU061R             |
| Part Number | 010-C0765-20         | 010-C0766-20  | 010-C0767-20                 | 010-C1103-20          | 010-C1104-20         |
| Price       | €149.99              | €149.99       | €149.99                      | €149.99               | €149.99              |

# EUROPE ATLANTIC COAST 2



## BLUECHART G3 VISION

|             |                                        |                                     |                                      |                               |                                        |                       |
|-------------|----------------------------------------|-------------------------------------|--------------------------------------|-------------------------------|----------------------------------------|-----------------------|
|             | <b>Barcelona and Valencia</b>          | <b>Alicante-Cabo de Sao Vicente</b> | <b>English Channel, Central-East</b> | <b>Bretagne</b>               | <b>Bristol Channel and England S/W</b> | <b>Thames Estuary</b> |
| Region      | EU454S                                 | EU455S                              | EU456S                               | EU457S                        | EU463S                                 | EU461S                |
| ID Code     | VUE454S                                | VUE455S                             | VUE456S                              | VUE457S                       | VUE463S                                | VUE461S               |
| Part Number | 010-C0798-00                           | 010-C0799-00                        | 010-C0800-00                         | 010-C0801-00                  | 010-C0807-00                           | 010-C0805-00          |
| Price       | €199.99                                | €199.99                             | €199.99                              | €199.99                       | €199.99                                | €199.99               |
|             | <b>Bristol Channel and England S/W</b> | <b>Penmarch-Les Sables d'Olonne</b> | <b>La Baule-San Sebastian</b>        | <b>Golfe Du Lion-San Remo</b> | <b>Blackpool-Cardiff</b>               | <b>Portugal</b>       |
| Region      | EU463S                                 | EU464S                              | EU465S                               | EU466S                        | EU467S                                 | EU479S                |
| ID Code     | VUE463S                                | VUE464S                             | VUE465S                              | VUE466S                       | VUE467S                                | VUE479S               |
| Part Number | 010-C0807-00                           | 010-C0808-00                        | 010-C0809-00                         | 010-C0810-00                  | 010-C0811-00                           | 010-C0823-00          |
| Price       | €199.99                                | €199.99                             | €199.99                              | €199.99                       | €199.99                                | €199.99               |
|             | <b>Wexford-Dingle Bay</b>              | <b>Galway Bay-Cork</b>              | <b>Ireland North-West</b>            | <b>Fuenterrabia-Gijon</b>     | <b>Galicia and Asturias</b>            | <b>Azores Islands</b> |
| Region      | EU482S                                 | EU483S                              | EU484S                               | EU485S                        | EU486S                                 | EU502S                |
| ID Code     | VUE482S                                | VUE483S                             | VUE484S                              | VUE485S                       | VUE486S                                | VEU502S               |
| Part Number | 010-C0826-00                           | 010-C0827-00                        | 010-C0828-00                         | 010-C0829-00                  | 010-C0830-00                           | 010-C0846-00          |
| Price       | €199.99                                | €199.99                             | €199.99                              | €279.99                       | €199.99                                | €199.99               |





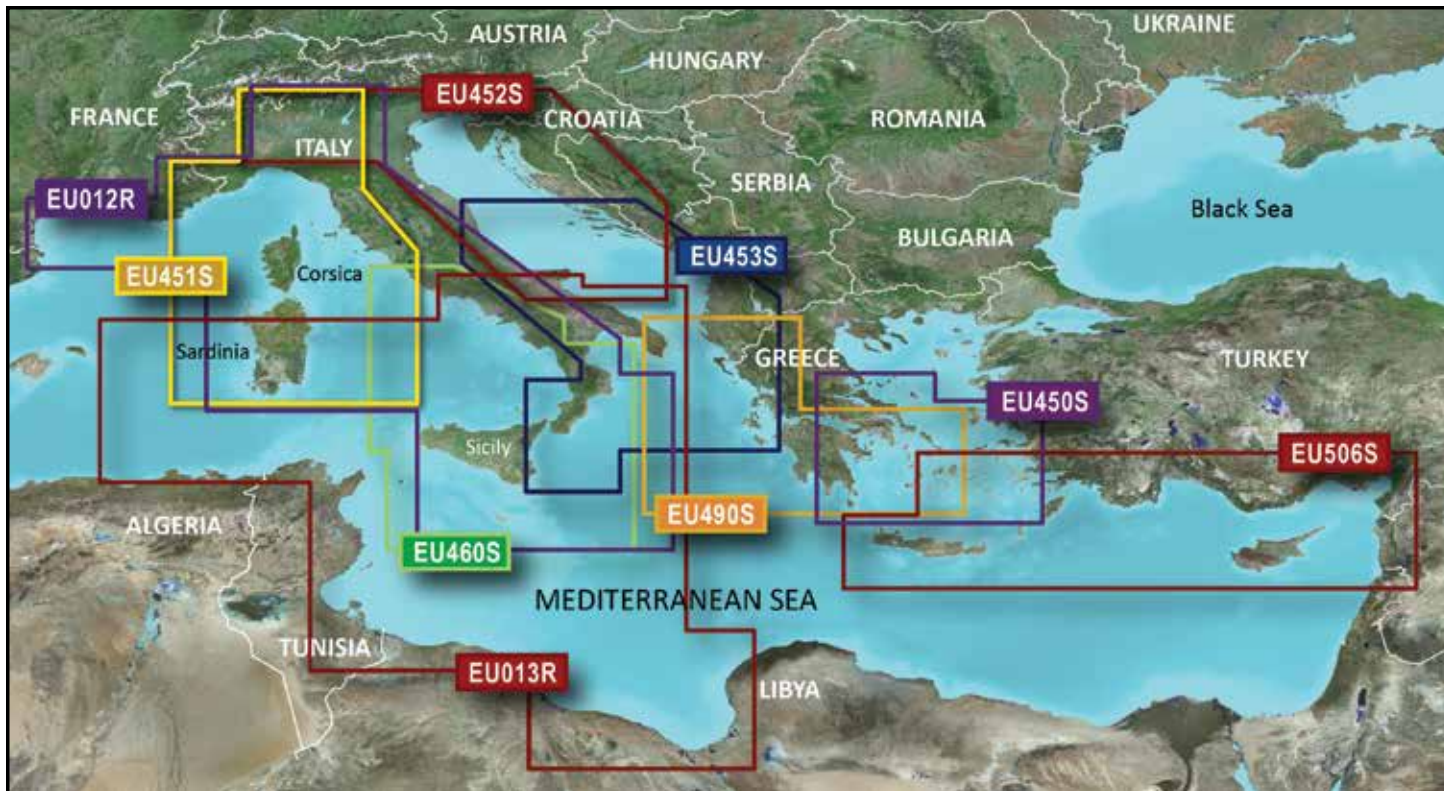
# MEDITERRANEAN

## BLUECHART G3 VISION

|             | Spain, Mediterranean Coast | Italy, Adriatic Sea | Aegean Sea and Sea of Marmara | Mediterranean Southeast | Southern Europe |
|-------------|----------------------------|---------------------|-------------------------------|-------------------------|-----------------|
| Region      | EU010R                     | EU014R              | EU015R                        | EU016R                  | EU723L          |
| ID Code     | VEU010R                    | VEU014R             | VEU015R                       | VEU016R                 | VEU723L         |
| Part Number | 010-C0768-00               | 010-C0772-00        | 010-C0773-00                  | 010-C0774-00            | 010-C1157-00    |
| Price       | €279.99                    | €279.99             | €279.99                       | €279.99                 | €399.99         |

## BLUECHART G3

|             | Spain, Mediterranean Coast | Italy, Adriatic Sea | Aegean Sea and Sea of Marmara | Mediterranean Southeast |
|-------------|----------------------------|---------------------|-------------------------------|-------------------------|
| Region      | EU010R                     | EU014R              | EU015R                        | EU016R                  |
| ID Code     | HXEU010R                   | HXEU014R            | HXEU015R                      | HXEU016R                |
| Part Number | 010-C0768-20               | 010-C0772-20        | 010-C0773-20                  | 010-C0774-20            |
| Price       | €149.99                    | €149.99             | €149.99                       | €149.99                 |



## MEDITERRANEAN 2

### BLUECHART G3 VISION

|             | Mediterranean Sea, Central West | Italy Southwest and Tunisia  | Athens and Cyclades | Ligurian Sea-Corsica and Sardinia | Adriatic Sea, North Coast | Adriatic Sea, South Coast |
|-------------|---------------------------------|------------------------------|---------------------|-----------------------------------|---------------------------|---------------------------|
| Region      | EU012R                          | EU013R                       | EU450S              | EU451S                            | EU452S                    | EU453S                    |
| ID Code     | VEU012R                         | VEU013R                      | VEU450S             | VEU451S                           | VEU452S                   | VEU453S                   |
| Part Number | 010-C0770-00                    | 010-C0771-00                 | 010-C0794-00        | 010-C0795-00                      | 010-C0796-00              | 010-C0797-00              |
| Price       | €279.99                         | €279.99                      | €199.99             | €199.99                           | €199.99                   | €199.99                   |
|             | Sicily-Lido di Ostia            | Greece West Coast and Athens | Crete-Cyprus        |                                   |                           |                           |
| Region      | EU460S                          | EU490S                       | EU506S              |                                   |                           |                           |
| ID Code     | VEU460S                         | VEU490S                      | VEU506S             |                                   |                           |                           |
| Part Number | 010-C0804-00                    | 010-C0834-00                 | 010-C0850-00        |                                   |                           |                           |
| Price       | €199.99                         | €199.99                      | €199.99             |                                   |                           |                           |

### BLUECHART G3

|             | Mediterranean Sea, Central West | Italy Southwest and Tunisia |
|-------------|---------------------------------|-----------------------------|
| Region      | EU012R                          | EU013R                      |
| ID Code     | HXEU012R                        | HXEU013R                    |
| Part Number | 010-C0770-20                    | 010-C0771-20                |
| Price       | €149.99                         | €149.99                     |

# SOUTH AMERICA



## SOUTH AMERICA

### BLUECHART G2 VISION HD

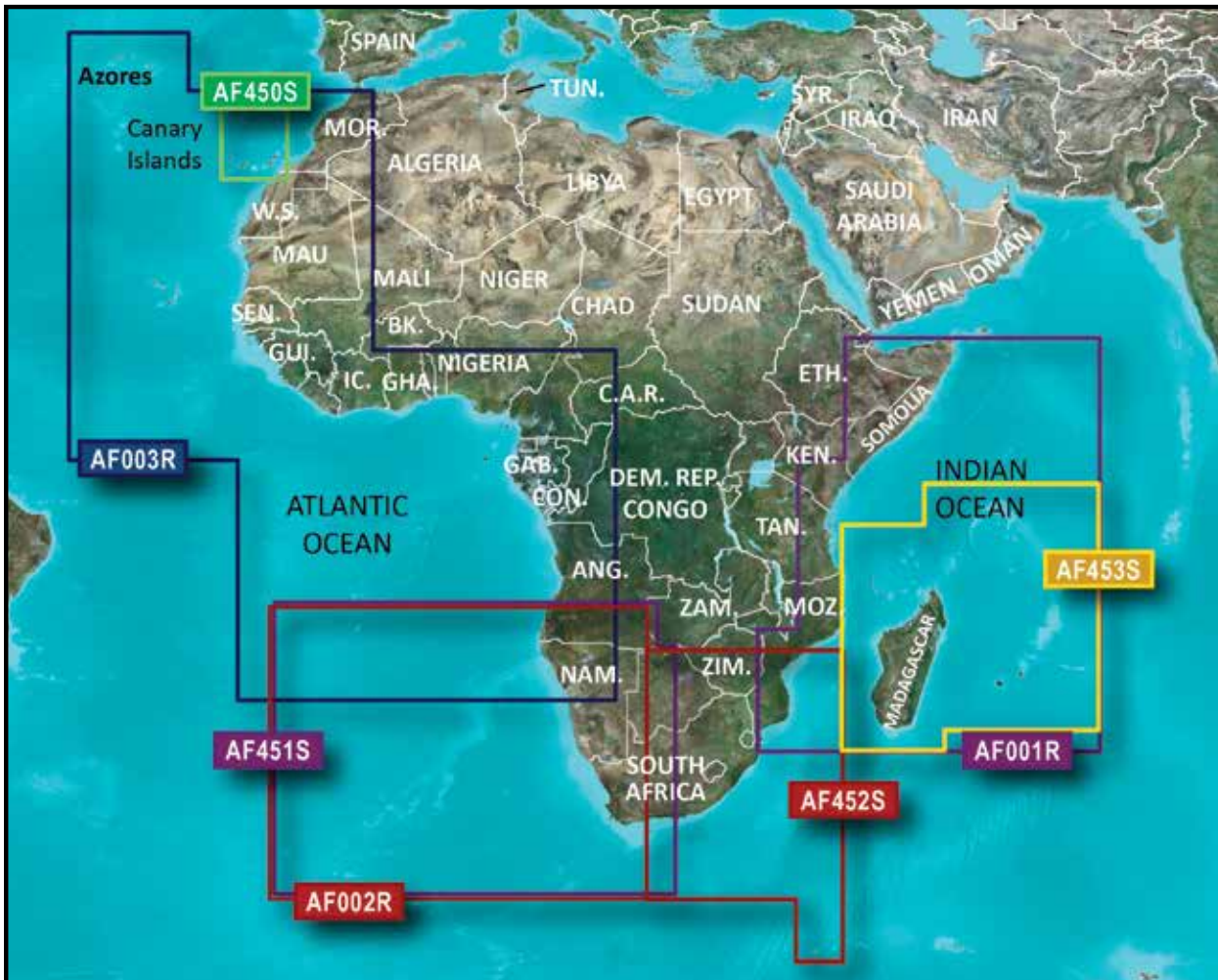
|             | South America East Coast | South America West Coast | Amazon River |
|-------------|--------------------------|--------------------------|--------------|
| Region      | SA001R                   | SA002R                   | SA009R       |
| ID Code     | VSA001R                  | VSA002R                  | VSA009R      |
| Part Number | 010-C1062-00             | 010-C1063-00             | 010-C1066-00 |
| Price       | €399.99                  | €399.99                  | €399.99      |

### BLUECHART G2 HD

|             | South America East Coast | South America West Coast | Amazon River | Rio de la Plata | South America |
|-------------|--------------------------|--------------------------|--------------|-----------------|---------------|
| Region      | SA001R                   | SA002R                   | SA009R       | SA400S          | SA600X        |
| ID Code     | HXSA001R                 | HXSA002R                 | HXSA009R     | HXSA400S        | HXSA600X      |
| Part Number | 010-C1062-20             | 010-C1063-20             | 010-C1066-20 | 010-C1111-20    | 010-C1067-20  |
| Price       | €169.99                  | €169.99                  | €169.99      | €129.99         | €249.99       |

# AFRICA

## AFRICA



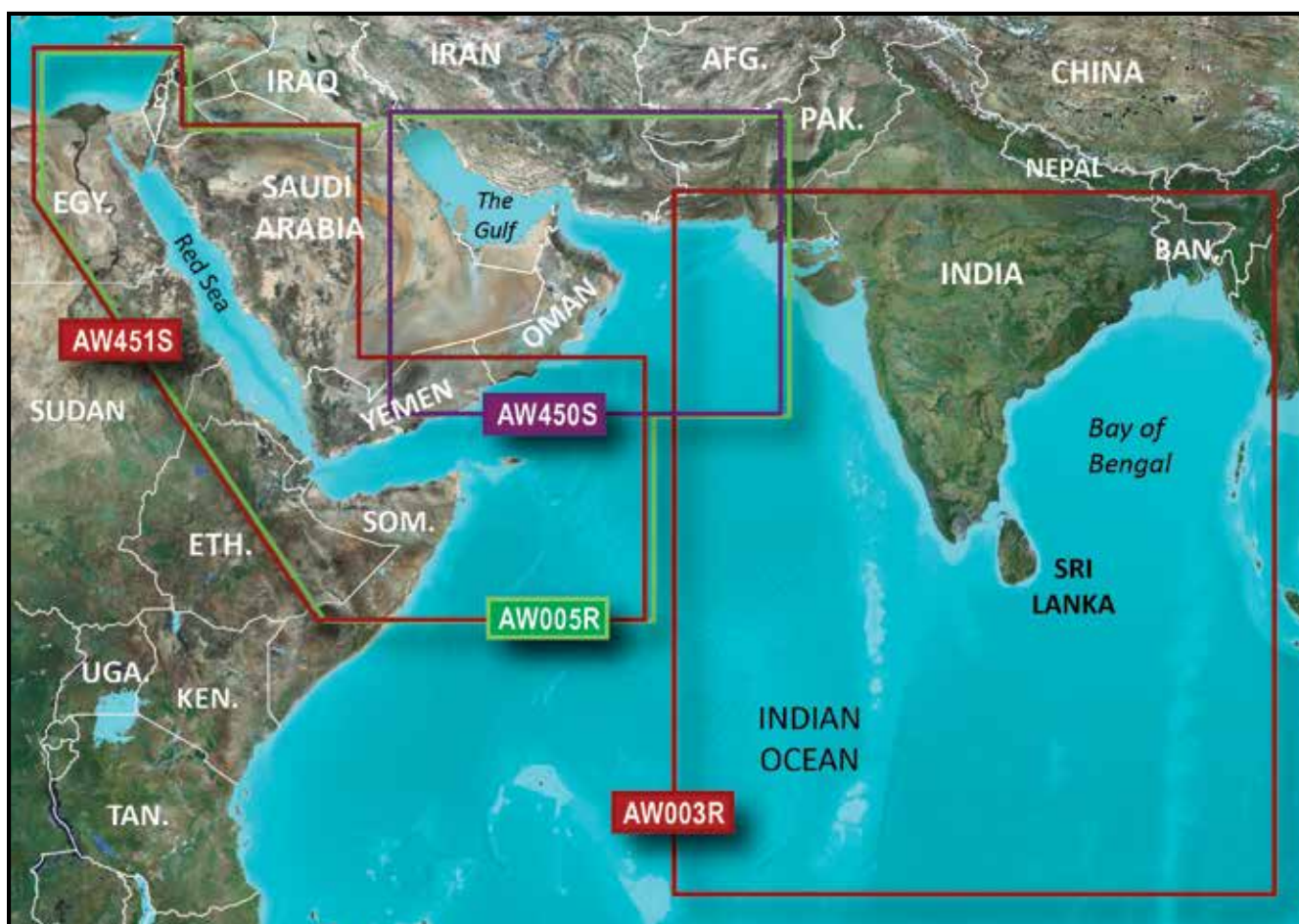
### BLUECHART G2 VISION HD

|             | Eastern Africa | South Africa | Western Africa | Madeira and Canary Islands | Namibia-Knysna, SA | Knysna, SA-Beira, MZ | Mascarene Plateau and Madagascar |
|-------------|----------------|--------------|----------------|----------------------------|--------------------|----------------------|----------------------------------|
| Region      | AF001R         | AF002R       | AF003R         | AF450S                     | AF451S             | AF452S               | AF453S                           |
| ID Code     | VAF001R        | VAF002R      | VAF003R        | VAF450S                    | VAF451S            | VAF452S              | VAF453S                          |
| Part Number | 010-C0747-00   | 010-C0748-00 | 010-C0749-00   | 010-C0750-00               | 010-C0751-00       | 010-C0752-00         | 010-C1152-00                     |
| Price       | €279.99        | €279.99      | €279.99        | €199.99                    | €199.99            | €199.99              | €199.99                          |

### BLUECHART G2 HD

|             | Eastern Africa | South Africa | Western Africa |
|-------------|----------------|--------------|----------------|
| Region      | AF001R         | AF002R       | AF003R         |
| ID Code     | HXAF001R       | HXAF002R     | HXAF003R       |
| Part Number | 010-C0747-20   | 010-C0748-20 | 010-C0749-20   |
| Price       | €149.99        | €149.99      | €149.99        |

# ASIA



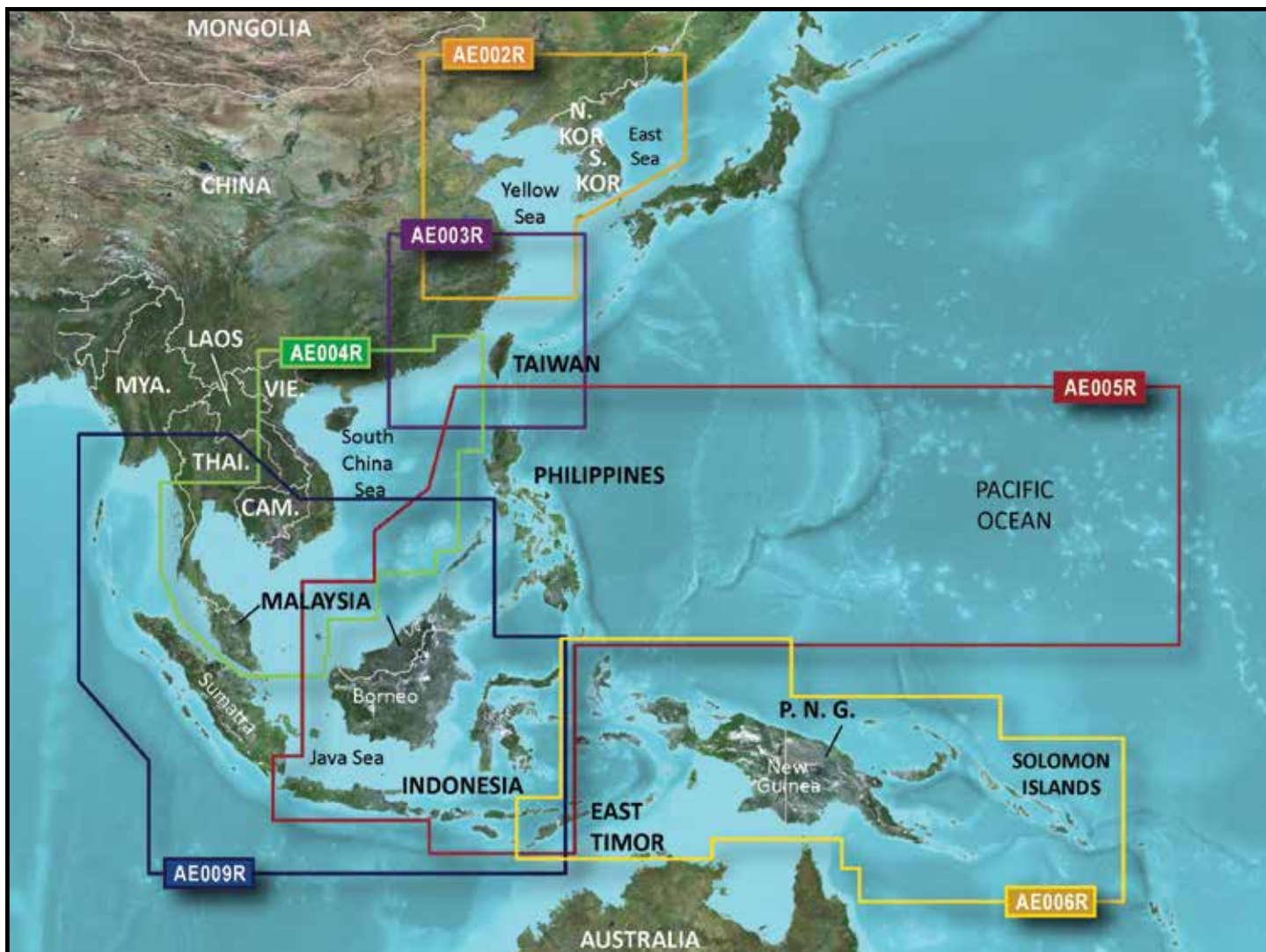
## WESTERN ASIA

### BLUECHART G2 VISION HD

|             | Indian Subcontinent | The Gulf and Red Sea | The Gulf     | Red Sea      |
|-------------|---------------------|----------------------|--------------|--------------|
| Region      | AW003R              | AW005R               | AW450S       | AW451S       |
| ID Code     | VAW003R             | VAW005R              | VAW450S      | VAW451S      |
| Part Number | 010-C0755-00        | 010-C0924-00         | 010-C0758-00 | 010-C0759-00 |
| Price       | €279.99             | €279.99              | €199.99      | €199.99      |

### BLUECHART G2 HD

|             | Indian Subcontinent | The Gulf and Red Sea |
|-------------|---------------------|----------------------|
| Region      | AW003R              | AW005R               |
| ID Code     | HXAW003R            | HXAW005R             |
| Part Number | 010-C0755-20        | 010-C0924-20         |
| Price       | €149.99             | €149.99              |



## EASTERN ASIA

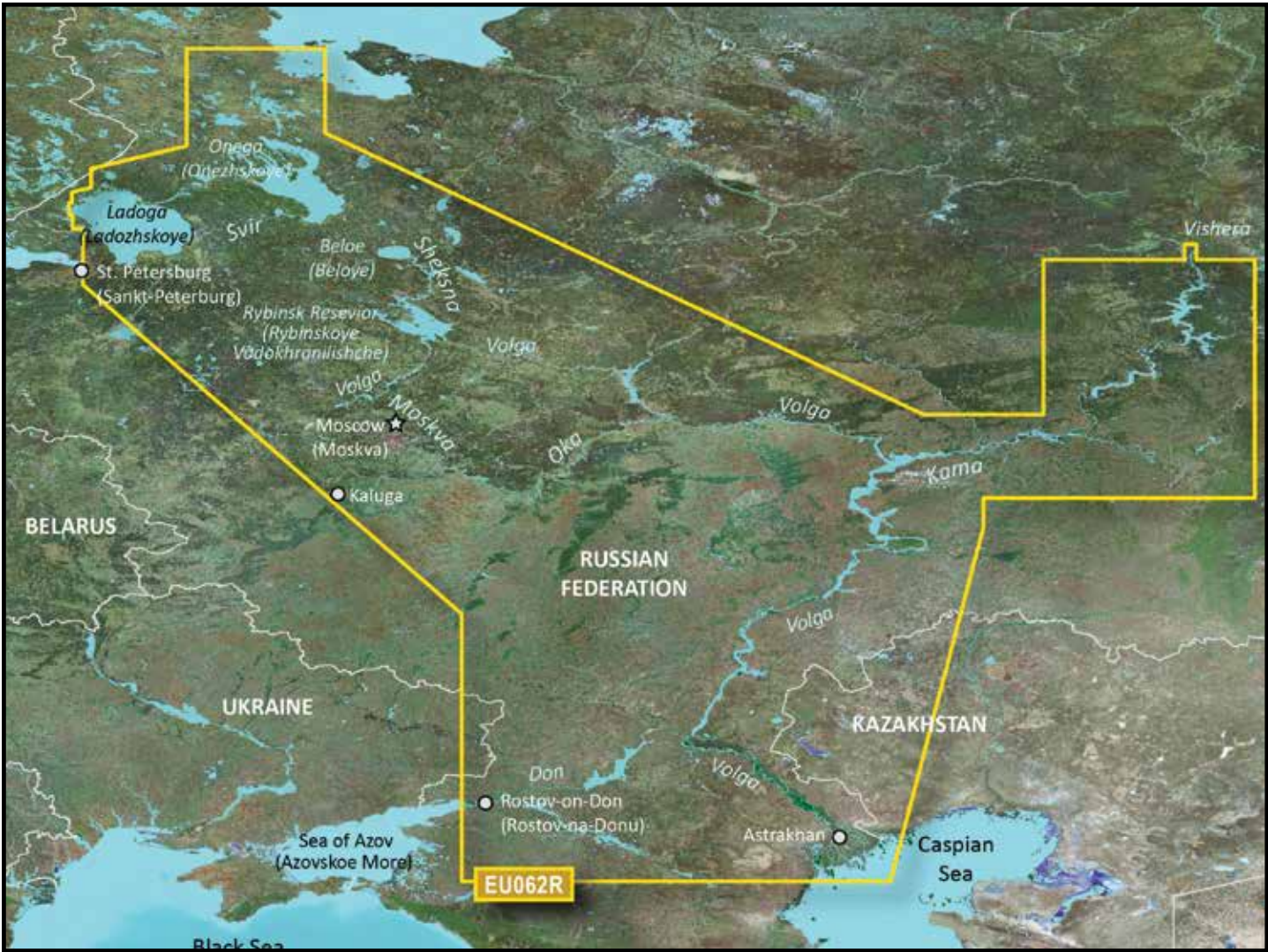
### BLUECHART G2 VISION HD

|             | Yellow Sea   | Taiwan       | South China Sea | Philippines-Java-Mariana Is | Timor-Leste-New Guinea | Sin/Mal/Indonesia |
|-------------|--------------|--------------|-----------------|-----------------------------|------------------------|-------------------|
| Region      | AE002R       | AE003R       | AE004R          | AE005R                      | AE006R                 | AE009R            |
| ID Code     | VAE002R      | VAE003R      | VAE004R         | VAE005R                     | VAE006R                | VAE009R           |
| Part Number | 010-C0877-00 | 010-C0878-00 | 010-C0879-00    | 010-C0880-00                | 010-C0881-00           | 010-C0884-00      |
| Price       | €399.99      | €399.99      | €399.99         | €399.99                     | €399.99                | €399.99           |

### BLUECHART G2 HD

|             | Yellow Sea   | Taiwan       | South China Sea | Philippines-Java-Mariana Is | Timor-Leste-New Guinea | Sin/Mal/Indonesia |
|-------------|--------------|--------------|-----------------|-----------------------------|------------------------|-------------------|
| Region      | AE002R       | AE003R       | AE004R          | AE005R                      | AE006R                 | AE009R            |
| ID Code     | HXAE002R     | HXAE003R     | HXAE004R        | HXAE005R                    | HXAE006R               | HXAE009R          |
| Part Number | 010-C0877-20 | 010-C0878-20 | 010-C0879-20    | 010-C0880-20                | 010-C0881-20           | 010-C0884-00      |
| Price       | €179.99      | €179.99      | €179.99         | €179.99                     | €179.99                | €179.99           |

# RUSSIA



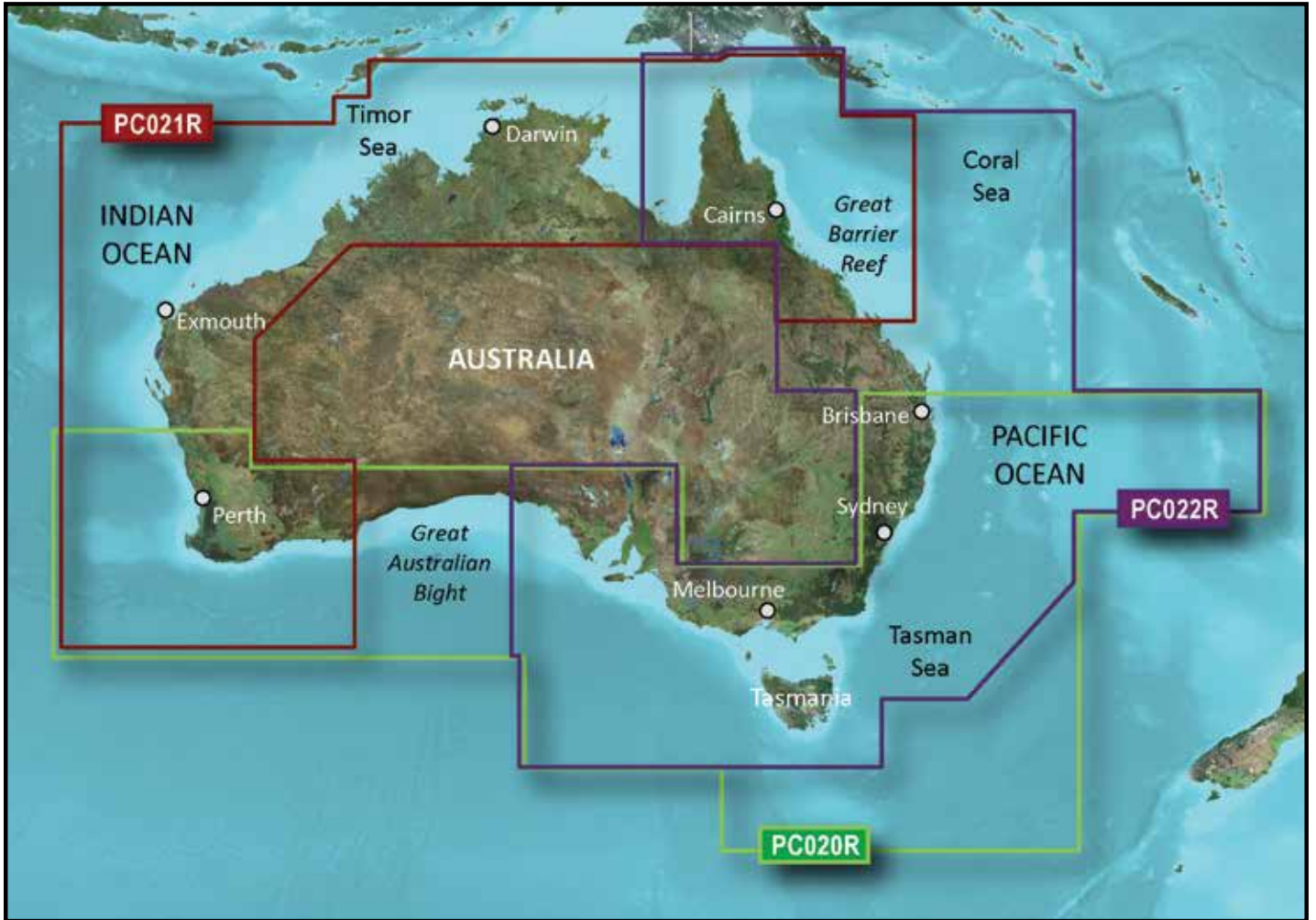
## RUSSIA

### BLUECHART G3

#### Russian Inland Waterways

|             |              |
|-------------|--------------|
| Region      | EU062R       |
| ID Code     | HXEU062R     |
| Part Number | 010-C1048-20 |
| Price       | €149.99      |

# AUSTRALIA/NEW ZEALAND

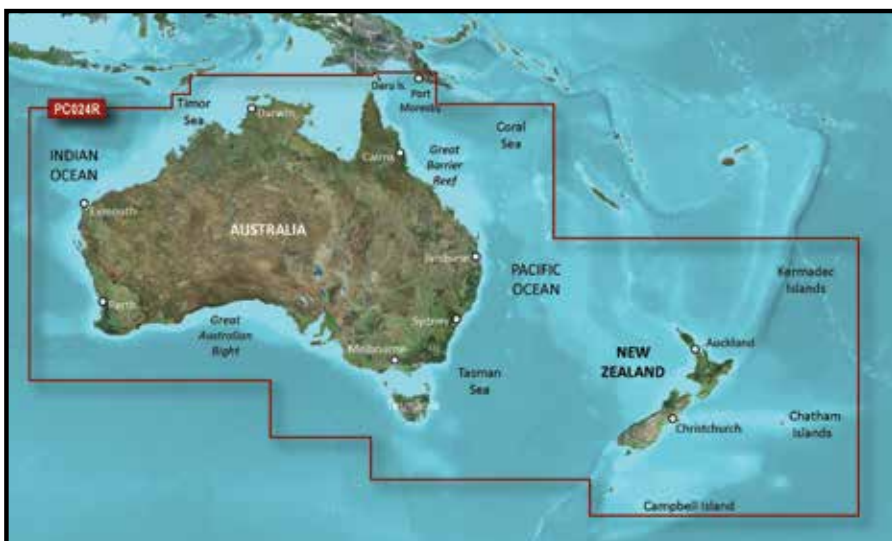


## AUSTRALIA/NEW ZEALAND 1

### BLUECHART G2 VISION HD

|             | Brisbane SW-<br>Geraldton | Mackay NW-<br>Esperance | East Coast<br>Australia |
|-------------|---------------------------|-------------------------|-------------------------|
| Region      | PC020R                    | PC021R                  | PC022R                  |
| ID Code     | VPC020R                   | VPC021R                 | VPC022R                 |
| Part Number | 010-C0753-00              | 010-C0754-00            | 010-C0756-00            |
| Price       | €279.99                   | €279.99                 | €279.99                 |





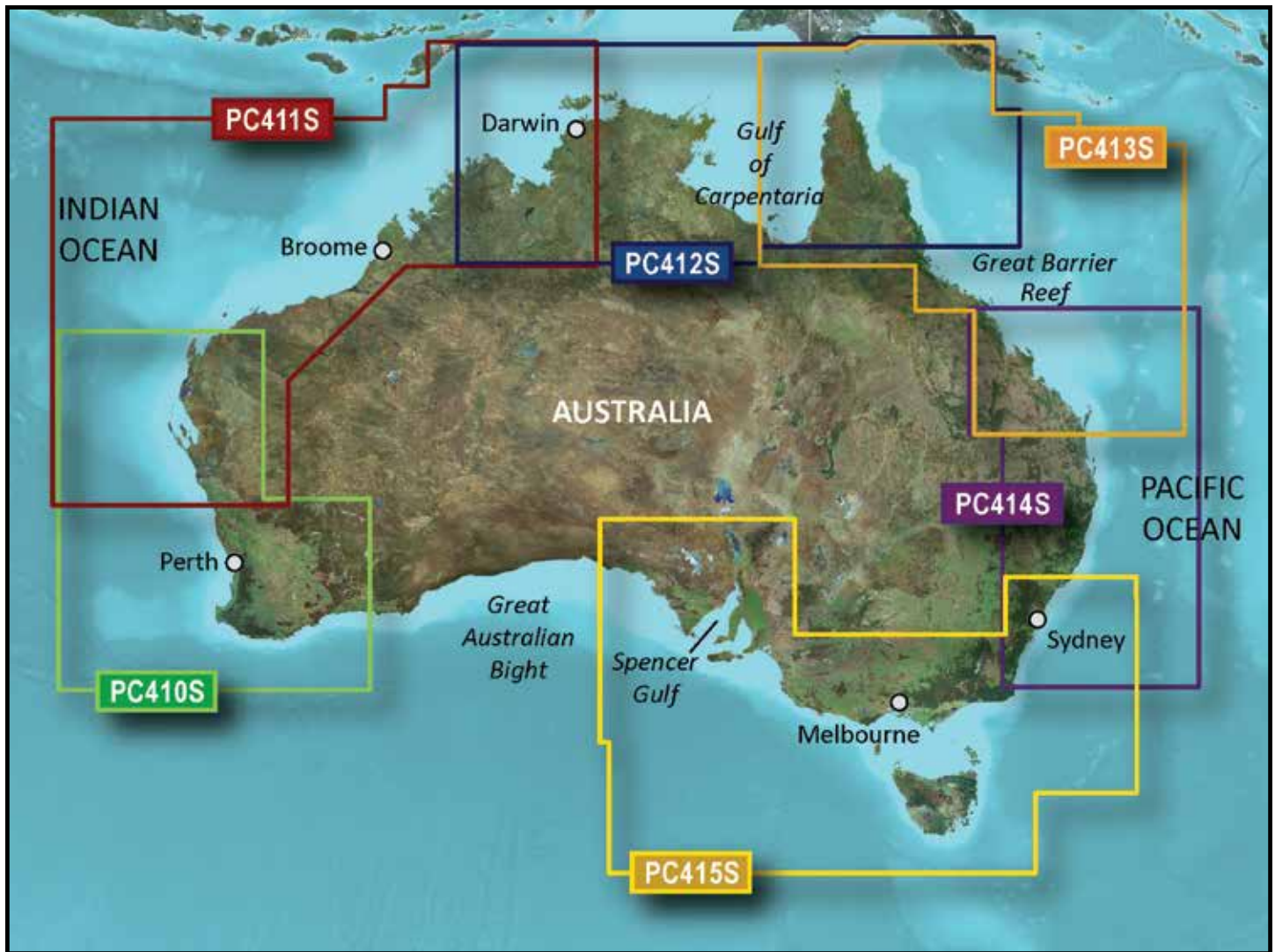
## AUSTRALIA/NEW ZEALAND 2

### BLUECHART G2 VISION HD

|             | New Zealand  | New Zealand North | New Zealand South |
|-------------|--------------|-------------------|-------------------|
| Region      | PC023R       | PC416S            | PC417S            |
| ID Code     | VPC023R      | VPC416S           | VPC417S           |
| Part Number | 010-C0757-00 | 010-C0874-00      | 010-C0875-00      |
| Price       | €279.99      | €219.99           | €219.99           |

### BLUECHART G2 HD

|             | Australia & New Zealand | New Zealand North | New Zealand South |
|-------------|-------------------------|-------------------|-------------------|
| Region      | PC024R                  | PC416S            | PC417S            |
| ID Code     | HXPC024R                | HXPC416S          | HXPC417S          |
| Part Number | 010-C1020-20            | 010-C0874-20      | 010-C0875-20      |
| Price       | €179.99                 | €94.99            | €94.99            |



## AUSTRALIA/NEW ZEALAND 3

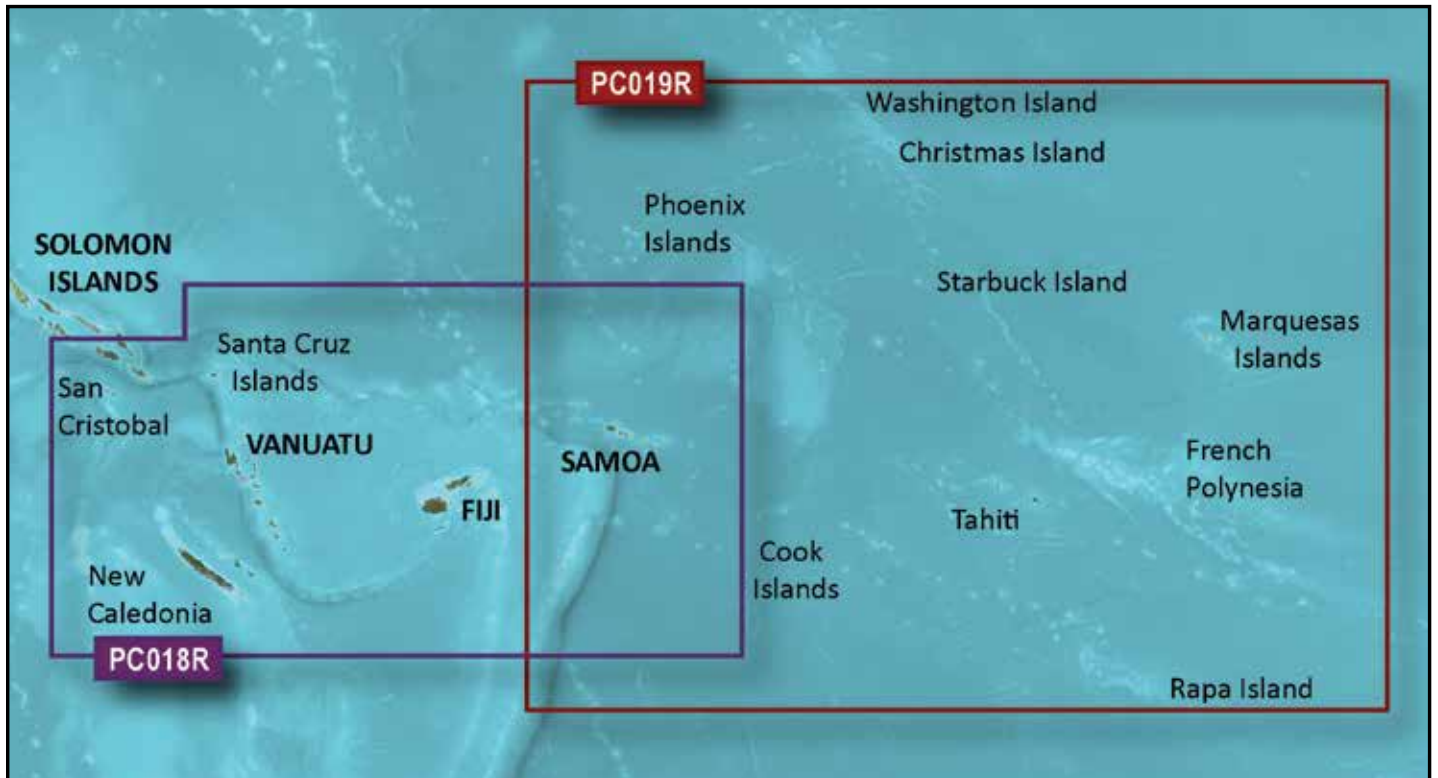
### BLUECHART G2 VISION HD

|             | Esperance-Exmouth Bay | Geraldton-Darwin | Admiralty Gulf WA-Cairns | Mornington Island-Hervey Bay | Mackay-Twofold Bay | Port Stephens-Fowlers Bay |
|-------------|-----------------------|------------------|--------------------------|------------------------------|--------------------|---------------------------|
| Region      | PC410S                | PC411S           | PC412S                   | PC413S                       | PC414S             | PC415S                    |
| ID Code     | VPC410S               | VPC411S          | VPC412S                  | VPC413S                      | VPC414S            | VPC415S                   |
| Part Number | 010-C0868-00          | 010-C0869-00     | 010-C0870-00             | 010-C0871-00                 | 010-C0872-00       | 010-C0873-00              |
| Price       | €219.99               | €219.99          | €219.99                  | €219.99                      | €219.99            | €219.99                   |

### BLUECHART G2 HD

|             | Esperance-Exmouth Bay | Geraldton-Darwin | Admiralty Gulf WA-Cairns | Mornington Island-Hervey Bay | Mackay-Twofold Bay | Port Stephens-Fowlers Bay |
|-------------|-----------------------|------------------|--------------------------|------------------------------|--------------------|---------------------------|
| Region      | PC410S                | PC411S           | PC412S                   | PC413S                       | PC414S             | PC415S                    |
| ID Code     | HXPC410S              | HXPC411S         | HXPC412S                 | HXPC413S                     | HXPC414S           | HXPC415S                  |
| Part Number | 010-C0868-20          | 010-C0869-20     | 010-C0870-20             | 010-C0871-20                 | 010-C0872-20       | 010-C0873-20              |
| Price       | €94.99                | €94.99           | €94.99                   | €94.99                       | €94.99             | €94.99                    |

# PACIFIC ISLANDS



## PACIFIC ISLANDS

### BLUECHART G2 VISION HD

|             | New Caledonia-Fiji | Polynesia    |
|-------------|--------------------|--------------|
| Region      | PC018R             | PC019R       |
| ID Code     | VPC018R            | VPC019R      |
| Part Number | 010-C0865-00       | 010-C0866-00 |
| Price       | €279.99            | €279.99      |

### BLUECHART G2 HD

|             | New Caledonia-Fiji | Polynesia    |
|-------------|--------------------|--------------|
| Region      | PC018R             | PC019R       |
| ID Code     | HXPC018R           | HXPC019R     |
| Part Number | 010-C0865-20       | 010-C0866-20 |
| Price       | €179.99            | €179.99      |

# GREENLAND



## GREENLAND

### BLUECHART G3 VISION

|             | Iceland-Orkney | Greenland    |
|-------------|----------------|--------------|
| Region      | EU043R         | EU064R       |
| ID Code     | VUE043R        | VEU064R      |
| Part Number | 010-C0780-00   | 010-C1001-00 |
| Price       | €279.99        | €279.99      |

### BLUECHART G3

|             | Iceland-Orkney | Greenland    |
|-------------|----------------|--------------|
| Region      | EU043R         | EU064R       |
| ID Code     | HXUE043R       | HXEU064R     |
| Part Number | 010-C0780-20   | 010-C1001-20 |
| Price       | €149.99        | €149.99      |





GARMIN MAKES NO WARRANTY AS TO THE ACCURACY OR COMPLETENESS OF MAP DATA IN THIS PRODUCT AND DISCLAIMS ANY AND ALL EXPRESS, IMPLIED OR STATUTORY WARRANTIES, INCLUDING ANY IMPLIED WARRANTY OF MERCHANTABILITY OR FITNESS FOR A PARTICULAR PURPOSE. IT IS THE USER'S RESPONSIBILITY TO USE THIS PRODUCT PRUDENTLY. THIS PRODUCT IS INTENDED TO BE USED ONLY AS A TRAVEL AID AND MUST NOT BE USED FOR ANY PURPOSE REQUIRING PRECISE MEASUREMENT OF DIRECTION, DISTANCE, LOCATION OR TOPOGRAPHY.

**WARNING:**

GARMIN BLUECHART DATA AND BOTTOM INFORMATION ARE FOR NAVIGATION REFERENCE ONLY, AS BOTTOM CONDITIONS ARE CONTINUALLY CHANGING. THIS PRODUCT IS FOR GENERAL REFERENCE.

**WARNINGS:** The electronic chart is an aid to navigation designed to facilitate the use of authorized government charts, not to replace them. Only official government charts and notices to mariners contain all information needed for the safety of navigation, and as always, the captain is responsible for their prudent use.

**ACKNOWLEDGEMENT OF THIRD-PARTY NOTICES AND COPYRIGHT LICENSES:** This product may contain cartography and other data from one or more of the following Third-Party sources; to the extent that any such source is used, the relevant provisions below shall apply:

Refer to: <https://www.garmin.com/en-US/legal/bluechart-g2-disclaimer>

**WARNING:**

No national hydrographic office (HO), State Authority, and their licensors have verified the information in this product or quality assured it, and none accept liability for the accuracy of reproduction or any modifications made thereafter. No national hydrographic office and their licensors make any warranties or representations, express or implied, with respect to this product. No national hydrographic office warrants that the product satisfies national or international regulations regarding the use of the appropriate products for navigation or that it contains the latest hydrographic information available.

**WARNING:**

All charts are digitized directly from existing government and other official charts and should not be used solely for navigation. Digital charts are intended to be used as an aid to traditional navigational charts, not as a replacement. Only official government charts and notices to mariners and notices to shipping/NAVAREA broadcasts and written alerts contain all information needed for the safety of navigation, and as always, the captain is responsible for their prudent use. A prudent navigator never relies on any single source of navigational information. Garmin strives to provide its customers with the most economical, accurate and up-to-date chart data. However, features are continually changing, so the data may not reflect the latest modifications and/or additions in your area. Garmin makes no warranty as to the accuracy or completeness of the data.

**WARNING:**

Some of the information in this product may have been produced, in part or whole, from withdrawn national hydrographic office products. New charts and/or NTM corrections will render this product obsolete and inaccurate.

**WARNING:**

U.S. National Park Service/Department of the Interior (NPS) property ownership data is compiled from deeds, plats, surveys and other source data. These are not engineering quality drawings and should be used for administrative purposes only. The National Park Service shall not be held liable for improper or incorrect use of the data described and/or contained herein. These data and related graphics are not legal documents and are not intended to be used as such. The information contained in these data is dynamic and may change over time. The data are not better than the original sources from which they were derived. It is the responsibility of the data user to use the data appropriately and consistent within the limitations of geospatial data in general and these data in particular. The related graphics are intended to aid the data user in acquiring relevant data; it is not appropriate to use the related graphics as data. The National Park Service gives no warranty, expressed or implied, as to the accuracy, reliability, or completeness of these data. It is strongly recommended that these data are directly acquired from an NPS server and not indirectly through other sources which may have changed the data in some way. Although these data have been processed successfully on a computer system at the National Park Service, no warranty expressed or implied is made regarding the utility of the data on another system or for general or scientific purposes, nor shall the act of distribution constitute any such warranty. This disclaimer applies both to individual use of the data and aggregate use with other data. The data is intended for use as a tool for display and general GIS analysis purposes only. It is in no way intended for engineering or legal purposes. The data accuracy is checked against best available sources which may be dated. NPS assumes no liability for use of this data.

**WARNING:**

The Great Barrier Reef Marine Park Authority ("the Authority") does not check the information in this product and accepts no liability for the accuracy of copying or for any modifications that may have been made to the information which it has supplied. Use of and entry to the Great Barrier Reef Marine Park is controlled by the Great Barrier Reef Marine Park Act 1975 (Cth) ("the Act"). Penalties apply for use of or entry to a zone for a purpose other than for a purpose permitted under the Great Barrier Reef Marine Park Zoning Plan 2003 ("the Zoning Plan") prepared by the Authority pursuant to section 32 of the Act. This product does not contain all information concerning permitted use or entry under the Zoning Plan. For purposes of use of or entry to the Great Barrier Reef Marine Park, this product should only be used in conjunction with the Zoning Plan and the Great Barrier Reef Marine Park Regulations 1983 (Cth). For purposes of navigation, users should consult official navigation charts released by relevant government authorities.

**WARNING:**

The Department of Transportation does not check the information in this product and the Crown in right of the State of Western Australia accepts no liability for the accuracy of copying or for any modifications that may have been made to the information which it has supplied. Furthermore, the Crown in right of the State of Western Australian does not warrant the accuracy of any information contained in any of its charts, maps or data of whatsoever nature.

**WARNING:**

The open geographic data is provided 'as is' and the Danish Geodata Agency shall not be liable for content, origin, errors or omissions in the Data and shall not be liable for any loss or damage caused by its use.

**CAUTION:**

The bathymetric reactions contained in this product have been carried out with the standards in force at the time of their publication. No verification and/or validation by the Government of Quebec. Assumes no responsibility for the accuracy of the bathymetric data or data included in this product cannot be responsible for the conclusions obtained or damage suffered as a result of the use of this product. Bathymetric data from Quebec provide general representations and structures under the surface of the water. The bathymetric data of Quebec are not suitable for use to surface navigation. It may expect non-mapped obstacles.

**DISCLAIMER:**

This information is intended as a general guide to artificial reef sites off the Georgia coast and is not intended for use as a navigational guide for offshore and coastal waters. The Hawaii Artificial Reef data is provided "AS IS" and without warranties of any kind. The information may change without prior notice and may not be the latest update. Users of this data are therefore fully responsible for checking the accuracy, completeness, currency and suitability of content found in this data themselves. TPWD provides the Artificial Reefs Interactive Mapping Application as a public service in support of TPWD's mission to manage and conserve the natural and cultural resources of Texas and to provide hunting, fishing and outdoor recreation opportunities for the use and enjoyment of present and future generations. TPWD makes no representation or warranty, express or implied, regarding the accuracy, completeness, currency, or suitability of any information provided herein for any purpose. In consideration for using the Artificial Reefs Interactive Mapping Application all persons thereby release and hold harmless TPWD from and against any and all claims and/or damages that may result from use of the information contained or posted therein.

**DISCLAIMER:**

This product has been created by Garmin Ltd. And its subsidiaries, using data owned by and provided under license from the Province of British Columbia. Reproduction of this product or any such data by any means is prohibited also "DO NOT USE THESE MAPS FOR NAVIGATIONAL PURPOSES. These maps may not reflect current conditions. Uncharted hazards may

exist.”

DISCLAIMER:

This data was produced by the Lower Colorado River Authority (LCRA) for its own use. Accordingly, certain information, features, or details may have been emphasized over others, or may have been left out. The LCRA does not warrant the accuracy of this data, either as to scale, accuracy or completeness. IN ADDITION, THE LCRA EXPRESSLY DISCLAIMS ANY AND ALL WARRANTIES, EXPRESSED OR IMPLIED, INCLUDING THE WARRANTIES OF MERCHANTABILITY AND FITNESS FOR PURPOSE. If this data is reproduced or displayed on a map, the reproducer shall insure that this disclaimer accompanies the map, and in the event the reproducer fails to include a copy of this disclaimer with the map or data, the reproducer hereby agrees to indemnify, defend, and hold harmless the LCRA and its directors, officers, and employees from and against any and all claims, demands, suits, or judgments, directly or indirectly arising out of reproducer's dissemination of the map or data to others.

“This reproduction, partial or complete, of any National Geospatial-Intelligence Agency (NGA), National Imagery and Mapping Agency (NIMA) or Defense Mapping Agency (DMA) product, information or data is not approved, authorized or endorsed by the Secretary of Defense, the Director of National Intelligence, the Director, NGA or any other element of the US Government. The US Government and NGA accept no liability for the accuracy or quality of this reproduction or the use of any NGA, NIMA or DMA products, information or data.”

“This product has been produced by Navionics based on “Canadian Hydrographic Service (CHS)” data, following any minimum standards/guidelines that may have been established by CHS, pursuant to CHS Digital Value-Added Reseller Agreement No.2017-1114-1260-N. The incorporation of data sourced from CHS in this product shall not be construed as constituting an endorsement by CHS of this product. This product does not meet the requirements of the Charts and Nautical Publications Regulations,1995 under the Canada Shipping Act, 2001. Charts and publications issued by or on the authority of CHS must be used to meet the requirements of those regulations.”

“Contains information published by the Canadian Coast Guard and Department of Fisheries and Oceans licensed under the Canadian Coast Guard Open Information License. This Information is available in its original format for free download on the Canadian Coast Guard website and the Monthly Edition of the Notices to Mariners (NOTMAR) website”

“The bathymetric metadata and Digital Terrain Model data products have been derived from the EMODnet Hydrography portal - <http://www.emodnet-hydrography.eu>. -This portal was initiated by the European Commission as part of developing the European Marine Observation and Data Network (EMODNet). The overall objective of EMODnet is to create pilots to migrate fragmented and inaccessible marine data into interoperable, continuous and publicly available data streams for complete maritime basins. The Hydrography portal development started in June 2009 and now provides a range of options for freely browsing and downloading new Digital Terrain Models (DTM) for a large part of the European seas. The downloadable tiles are freely available in a number of formats. The EMODnet digital bathymetry has been produced from bathymetric survey data and aggregated bathymetry data sets collated from public and private organizations. These are processed and quality controlled. A further refinement and expansion is underway, by gathering additional survey data sets, expanding geographical coverage to all European sea regions and upgrading the DTM grid resolution, and will result in new releases in time. The portal also includes a metadata discovery service that gives clear information about the background survey data used for the DTMs, their access restrictions, originators and distributors.”

“State of Queensland, Department of Transport and Main Roads (Maritime Safety Queensland). When using the Beacon to Beacon Guide booklets and/or the maps contained therein for commercial or non-commercial purposes, the Department of Transport and Main Roads (Maritime Safety Queensland) gives no warranty of any kind whether express, implied, statutory or otherwise in respect to the availability, accuracy, currency, completeness, quality or reliability of the information or that the information will be fit for any particular purpose or will not infringe any third party Intellectual Property rights and the liability (including without limitation, liability in negligence, negligent misstatement and pure economic loss) of the Department of Transport and Main Roads (Maritime Safety Queensland) for any direct, indirect or consequential loss, damage, cost or expense howsoever resulting from the use of, or reliance on, the information is entirely excluded”.

“This Garmin electronic marine chart incorporates Data which is ©Commonwealth of Australia (“Great Barrier Reef Marine Park Authority, 2019”, Marine Parks from the “Department of the Environment and Energy, 2019”). The Data has been used in this Garmin electronic marine chart with the permission of the Commonwealth. The Commonwealth has not evaluated the Data as altered and incorporated within this Garmin electronic marine chart, and therefore gives no warranty regarding its accuracy, completeness, currency or suitability for any particular purpose.”

“The “Crown in Right of the State of Western Australia” accepts no liability for the accuracy of copying of information contained in this product and does not warrant that this product meets any regulations as an appropriate product for navigation.”

“Japan Coast Guard (JCG) Permission No 252509-A,

本NAVIONICS電子参考図及びNAVIONICSアプリは航海用電子海図ではありません,詳細な情報及び最新の情報については、政府発行の海図、水路誌及び灯台表並びに水路通報及び航海警報を参照してください,海上保安庁許可第252509号 測地系：世界測地系WGS-84”

LakeVü™ HD Ultra Lakes DEM data © 2012-2019 Intermap Technologies Inc. All rights reserved. Intermap, the Intermap logo, and NEXTmap is a registered trademark of Intermap Technologies, Inc. in the U.S. and other countries.

Canadian shoreline information in this product is reproduced, in whole or part, courtesy of CanVec+ Government of Canada: © Department of Natural Resources Canada; Earth Sciences Sector; Canada Centre for Mapping and Earth Observation. All rights reserved. <http://www.geogratis.gc.ca/geogratis/en/index.html>.

\*\*Satellite imagery is included for many BlueChart g2 Vision HD products. BlueChart g2 Vision HD does not contain photos for all products.

HERE road data is included for many BlueChart g2 Vision HD products. Not all products contain road data. © 1987-2019 HERE. All rights reserved. Use of the Map Data is subject to certain restrictions and/or requirements imposed by third party suppliers and/or governmental or regulatory authorities as further set forth at <https://legal.here.com/terms/general-content-supplier/terms-and-notice.html>.

Additional city point data is courtesy of National Highway Planning Network on behalf of Federal Highway Administration (FHWA), United States Department of Transportation.

All above Companies, Institutions and Hydrographic Offices have not verified the product and do not accept liability for its accuracy.

OTHER PARTNERS

“Transform and Lighting, [www.trasformandlighting.com](http://www.trasformandlighting.com)”,

“Regione Toscana, Programma Operativo Regionale, Obiettivo Competitività Regionale e Occupazione (PORCreO) 2007-2013, Fondo Europeo di Sviluppo Regionale, Unione Europea”

Copyright © 2019 Navionics

NOTICE:

Federal and State laws provide for the protection of certain archaeological and other cultural resources, including objects and sites that might be found in lakes and other bodies of water. It is your responsibility to know about and comply with these laws at all times.

NOTICE:

New Chart Guarantee ensures with this purchase you are entitled to the newest charts available. This product may be programmed on a recycled data card.

